

Product datasheet for **TA340659**

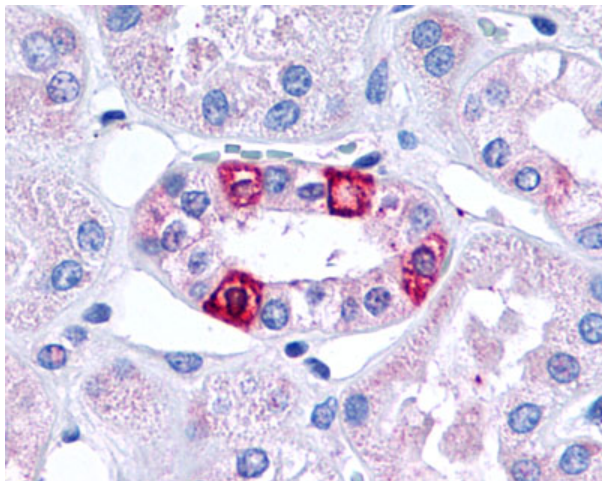
5 HT1F (HTR1F) Rabbit Polyclonal Antibody

Product data:

Product Type:	Primary Antibodies
Applications:	IHC
Recommended Dilution:	IHC-P (6 - 9 µg/ml)
Reactivity:	Human (Predicted: Mouse, Rat, Bovine, Dog, Hamster, Rabbit)
Host:	Rabbit
Clonality:	Polyclonal
Immunogen:	HTR1F / 5-HT1F Receptor antibody was raised against synthetic 19 amino acid peptide from 3rd cytoplasmic domain of human 5HT1F Receptor. Percent identity with other species by BLAST analysis: Human, Chimpanzee, Gorilla, Orangutan, Monkey, Panda, Bat (100%); Gibbon, Mouse, Rat, Hamster, Elephant, Dog, Bovine, Rabbit (95%); Horse (89%).
Formulation:	PBS, 0.1% sodium azide.
Concentration:	lot specific
Purification:	Immunoaffinity purified
Conjugation:	Unconjugated
Storage:	Store at -20°C as received.
Stability:	Stable for 12 months from date of receipt.
Gene Name:	5-hydroxytryptamine receptor 1F
Database Link:	NP_000857 Entrez Gene 15557 Mouse Entrez Gene 60448 Rat Entrez Gene 100683938 Dog Entrez Gene 3355 Human P30939
Synonyms:	5-HT-1F; 5-HT1F; 5HT6; HTR1EL; MR77
Protein Families:	Druggable Genome, GPCR, Transmembrane
Protein Pathways:	Neuroactive ligand-receptor interaction



[View online »](#)

Product images:

Anti-5HT1F Receptor antibody IHC of human kidney, renal tubules. Immunohistochemistry of formalin-fixed, paraffin-embedded tissue after heat-induced antigen retrieval.