

Product datasheet for **TA340658**

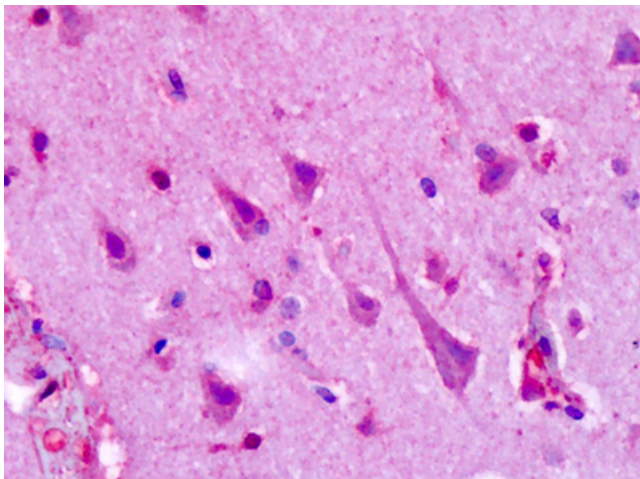
5 HT1F (HTR1F) Rabbit Polyclonal Antibody

Product data:

Product Type:	Primary Antibodies
Applications:	IHC
Recommended Dilution:	IHC-P (2 - 3 µg/ml)
Reactivity:	Human (Predicted: Xenopus)
Host:	Rabbit
Clonality:	Polyclonal
Immunogen:	HTR1F / 5-HT1F Receptor antibody was raised against synthetic 17 amino acid peptide from C-terminus of human 5HT1F Receptor. Percent identity with other species by BLAST analysis: Human, Chimpanzee, Gorilla, Orangutan, Gibbon, Monkey, Mouse, Rat, Hamster, Elephant, Panda, Dog, Bovine, Bat, Rabbit, Guinea pig, Turkey, Chicken, Platypus (100%); Xenopus, Stickleback, Pufferfish (94%); Opossum, Lizard (88%); Horse (82%).
Formulation:	PBS, 0.1% sodium azide.
Concentration:	lot specific
Purification:	Immunoaffinity purified
Conjugation:	Unconjugated
Storage:	Store at -20°C as received.
Stability:	Stable for 12 months from date of receipt.
Gene Name:	5-hydroxytryptamine receptor 1F
Database Link:	NP_000857 Entrez Gene 3355 Human P30939
Synonyms:	5-HT-1F; 5-HT1F; 5HT6; HTR1EL; MR77
Protein Families:	Druggable Genome, GPCR, Transmembrane
Protein Pathways:	Neuroactive ligand-receptor interaction



[View online »](#)

Product images:

Anti-HTR1F / 5-HT1F antibody IHC of human brain, cortex, neurons. Immunohistochemistry of formalin-fixed, paraffin-embedded tissue after heat-induced antigen retrieval. Antibody dilution 2-3 ug/ml.