

Product datasheet for **TA340655**

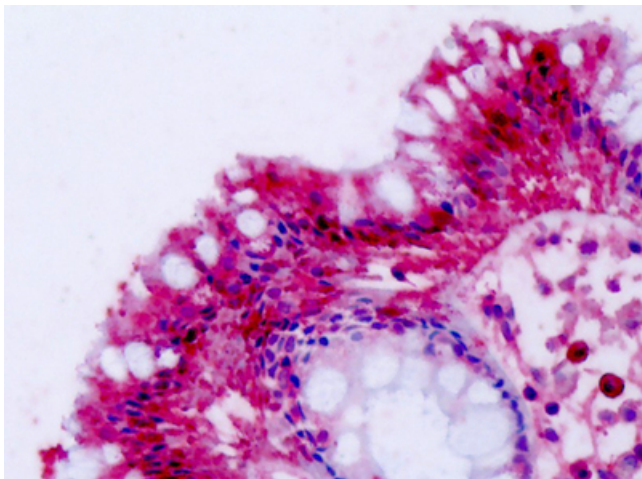
NPFFR2 Rabbit Polyclonal Antibody

Product data:

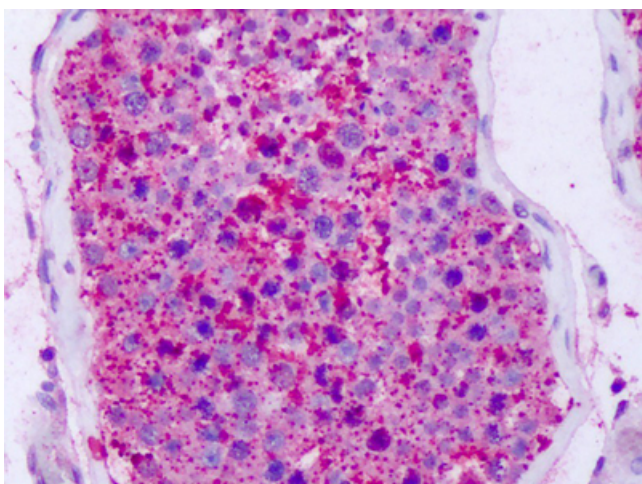
Product Type:	Primary Antibodies
Applications:	IHC
Recommended Dilution:	IHC-P (4 - 7 µg/ml)
Reactivity:	Human (Predicted: Monkey)
Host:	Rabbit
Clonality:	Polyclonal
Immunogen:	NPFF2 / NPFFR2 antibody was raised against synthetic 18 amino acid peptide from C-terminus of human NPFFR2. Percent identity with other species by BLAST analysis: Human, Gorilla (100%); Gibbon, Monkey (94%); Marmoset (89%).
Formulation:	PBS, 0.1% sodium azide.
Concentration:	lot specific
Purification:	Immunoaffinity purified
Conjugation:	Unconjugated
Storage:	Store at -20°C as received.
Stability:	Stable for 12 months from date of receipt.
Gene Name:	neuropeptide FF receptor 2
Database Link:	NP_001138228 Entrez Gene 705590 Monkey Entrez Gene 10886 Human Q9Y5X5
Synonyms:	GPR74; HLWAR77; NPFF2; NPGPR
Protein Families:	Druggable Genome, Transmembrane
Protein Pathways:	Neuroactive ligand-receptor interaction



[View online »](#)

Product images:

Anti-NPFF2 / NPFFR2 antibody IHC of human colon. Immunohistochemistry of formalin-fixed, paraffin-embedded tissue after heat-induced antigen retrieval. Antibody dilution 4-7 ug/ml.



Anti-NPFF2 / NPFFR2 antibody IHC of human testis. Immunohistochemistry of formalin-fixed, paraffin-embedded tissue after heat-induced antigen retrieval. Antibody dilution 4-7 ug/ml.