

Product datasheet for **TA340654**

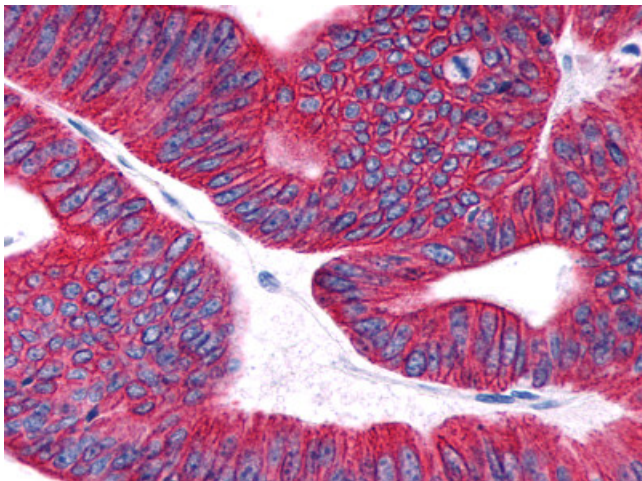
Prostaglandin D2 Receptor (PTGDR) Rabbit Polyclonal Antibody

Product data:

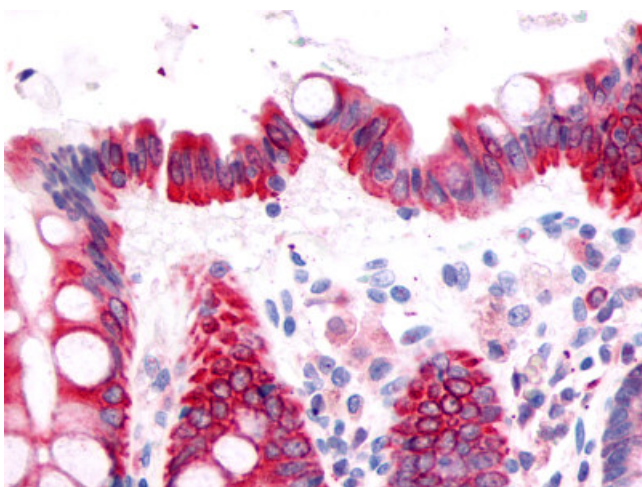
Product Type:	Primary Antibodies
Applications:	IHC
Recommended Dilution:	IHC-P (4 - 7 µg/ml)
Reactivity:	Human (Predicted: Monkey)
Host:	Rabbit
Clonality:	Polyclonal
Immunogen:	PTGDR / DP antibody was raised against synthetic 20 amino acid peptide from 3rd extracellular domain of human Prostaglandin D2 Receptor. Percent identity with other species by BLAST analysis: Human, Gorilla, Gibbon (100%); Monkey, Marmoset (95%); Dog, Pig (85%); Panda, Bovine (80%).
Formulation:	PBS, 0.1% sodium azide.
Concentration:	lot specific
Purification:	Immunoaffinity purified
Conjugation:	Unconjugated
Storage:	Store at -20°C as received.
Stability:	Stable for 12 months from date of receipt.
Gene Name:	prostaglandin D2 receptor (DP)
Database Link:	NP_000944 Entrez Gene 707918 Monkey Entrez Gene 5729 Human Q13258
Synonyms:	AS1; ASRT1; DP; DP1; PTGDR1
Protein Families:	Druggable Genome, GPCR, Transmembrane
Protein Pathways:	Neuroactive ligand-receptor interaction



[View online »](#)

Product images:

Anti-PTGDR / DP antibody IHC of human Colon, Carcinoma. Immunohistochemistry of formalin-fixed, paraffin-embedded tissue after heat-induced antigen retrieval.



Anti-Prostaglandin D2 Receptor antibody IHC of human colon, epithelium. Immunohistochemistry of formalin-fixed, paraffin-embedded tissue after heat-induced antigen retrieval.