

## Product datasheet for **TA340652**

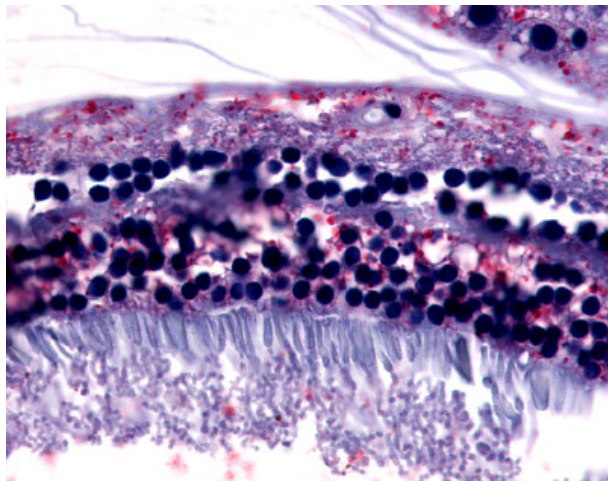
### GPR75 Rabbit Polyclonal Antibody

#### Product data:

Product Type:	Primary Antibodies
Applications:	IHC
Recommended Dilution:	IHC-P (3 - 6 µg/ml)
Reactivity:	Human (Predicted: Monkey)
Host:	Rabbit
Clonality:	Polyclonal
Immunogen:	GPR75 antibody was raised against synthetic 16 amino acid peptide from N-terminal extracellular domain of human GPR75. Percent identity with other species by BLAST analysis: Human, Gorilla (100%); Monkey (94%).
Formulation:	PBS, 0.1% sodium azide.
Concentration:	lot specific
Purification:	Immunoaffinity purified
Conjugation:	Unconjugated
Storage:	Store at -20°C as received.
Stability:	Stable for 12 months from date of receipt.
Gene Name:	G protein-coupled receptor 75
Database Link:	<a href="#">NP_006785</a> <a href="#">Entrez Gene 100426871 Monkey</a> <a href="#">Entrez Gene 10936 Human</a> <a href="#">O95800</a>
Synonyms:	GPRchr2; WI31133
Protein Families:	Druggable Genome, GPCR, Transmembrane



[View online »](#)

**Product images:**

Anti-GPR75 antibody IHC of human eye, retina. Immunohistochemistry of formalin-fixed, paraffin-embedded tissue after heat-induced antigen retrieval.