

## Product datasheet for **TA340649**

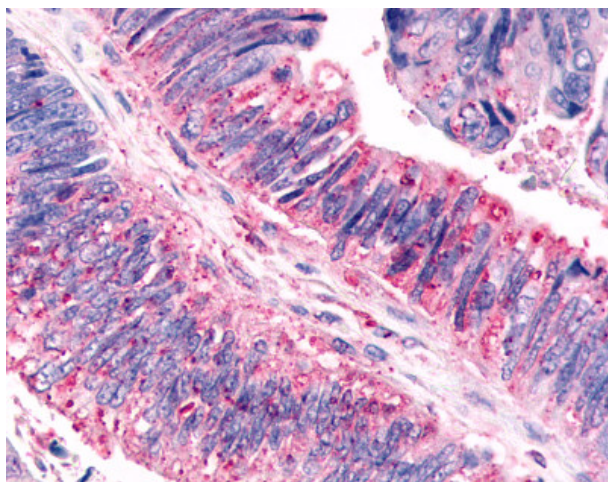
### Flamingo homolog 1 (CELSR3) Rabbit Polyclonal Antibody

#### Product data:

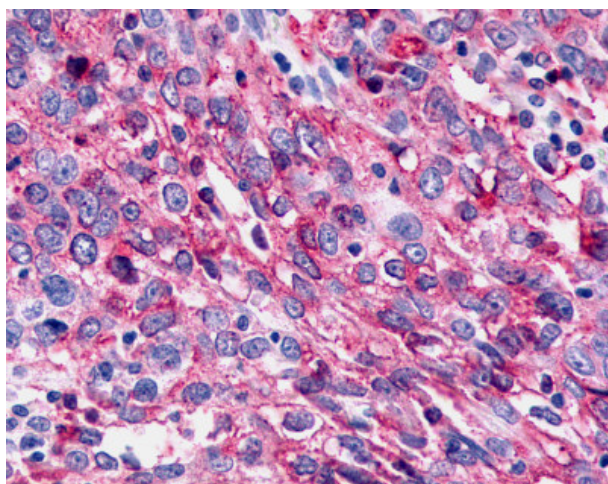
Product Type:	Primary Antibodies
Applications:	IHC
Recommended Dilution:	IHC-P (4 - 11 µg/ml)
Reactivity:	Human
Host:	Rabbit
Clonality:	Polyclonal
Immunogen:	CELSR3 antibody was raised against synthetic 15 amino acid peptide from N-terminal extracellular domain of human CELSR3. Percent identity with other species by BLAST analysis: Human, Gorilla, Gibbon, Monkey, Marmoset, Mouse, Rat, Hamster, Elephant, Panda, Bovine, Bat, Horse, Rabbit (100%); Opossum (93%).
Formulation:	PBS, 0.1% sodium azide.
Concentration:	lot specific
Purification:	Immunoaffinity purified
Conjugation:	Unconjugated
Storage:	Store at -20°C as received.
Stability:	Stable for 12 months from date of receipt.
Gene Name:	cadherin EGF LAG seven-pass G-type receptor 3
Database Link:	<a href="#">NP_001398</a> <a href="#">Entrez Gene 1951 Human</a> <a href="#">Q9NYQ7</a>
Synonyms:	ADGRC3; CDHF11; EGFL1; FMI1; HFMI1; MEGF2; RESDA1
Protein Families:	Druggable Genome, Transmembrane



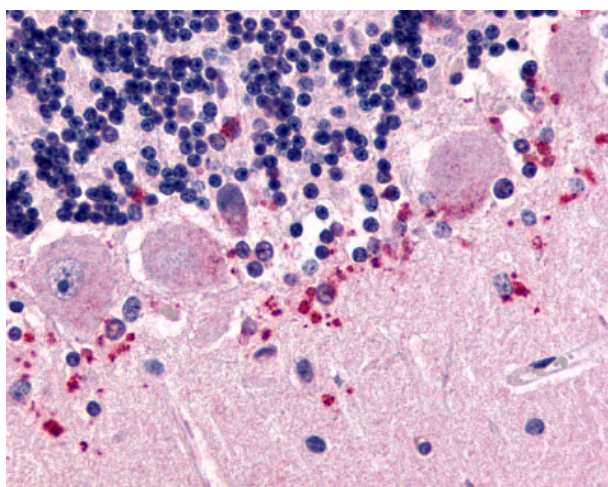
[View online »](#)

**Product images:**

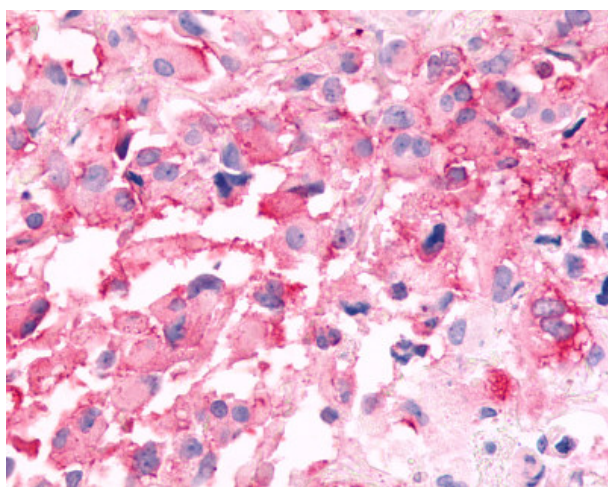
Anti-CELSR3 antibody IHC of human Colon, Carcinoma. Immunohistochemistry of formalin-fixed, paraffin-embedded tissue after heat-induced antigen retrieval.



Anti-CELSR3 antibody IHC of human Ovary, Carcinoma. Immunohistochemistry of formalin-fixed, paraffin-embedded tissue after heat-induced antigen retrieval.



Anti-CELSR3 antibody IHC of human brain, Purkinje cell layer. Immunohistochemistry of formalin-fixed, paraffin-embedded tissue after heat-induced antigen retrieval.



Anti-CELSR3 antibody IHC of human Brain, Glioblastoma. Immunohistochemistry of formalin-fixed, paraffin-embedded tissue after heat-induced antigen retrieval.