

Product datasheet for **TA340648**

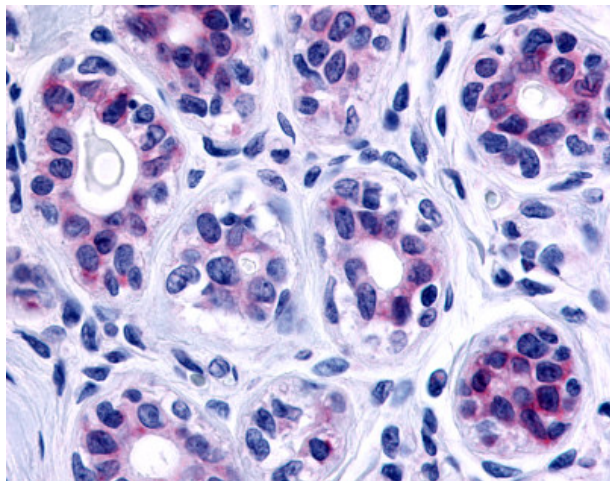
GPR115 (ADGRF4) Rabbit Polyclonal Antibody

Product data:

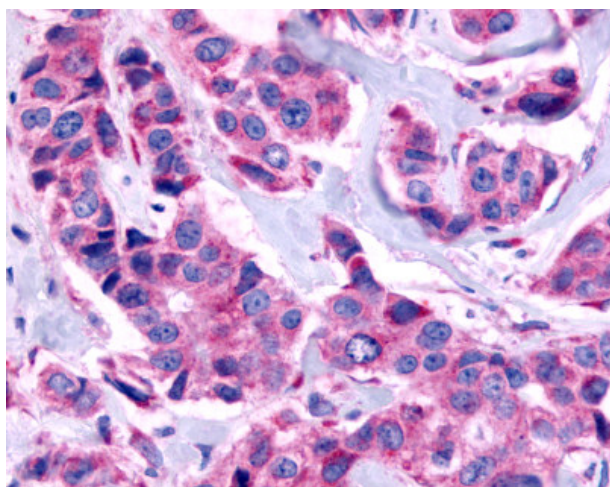
Product Type:	Primary Antibodies
Applications:	IHC
Recommended Dilution:	IHC-P (4 - 10 µg/ml)
Reactivity:	Human (Predicted: Dog, Rabbit)
Host:	Rabbit
Clonality:	Polyclonal
Immunogen:	GPR115 antibody was raised against synthetic 16 amino acid peptide from C-terminus of human GPR115. Percent identity with other species by BLAST analysis: Human, Gorilla, Gibbon, Monkey, Marmoset, Mouse, Bovine, Horse (100%); Elephant, Dog, Rabbit (94%).
Formulation:	PBS, 0.1% sodium azide.
Concentration:	lot specific
Purification:	Immunoaffinity purified
Conjugation:	Unconjugated
Storage:	Store at -20°C as received.
Stability:	Stable for 12 months from date of receipt.
Gene Name:	adhesion G protein-coupled receptor F4
Database Link:	NP_722580 Entrez Gene 481827 Dog Entrez Gene 221393 Human Q8IZF3
Synonyms:	GPR115; PGR18
Protein Families:	Druggable Genome, Transmembrane



[View online »](#)

Product images:

Anti-GPR115 antibody IHC of human breast, epithelium. Immunohistochemistry of formalin-fixed, paraffin-embedded tissue after heat-induced antigen retrieval.



Anti-GPR115 antibody IHC of human Breast, Carcinoma. Immunohistochemistry of formalin-fixed, paraffin-embedded tissue after heat-induced antigen retrieval.