

Product datasheet for **TA340647**

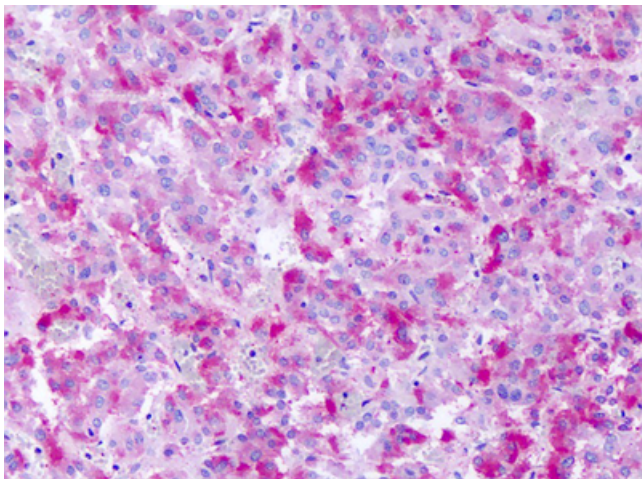
GPR 139 (GPR139) Rabbit Polyclonal Antibody

Product data:

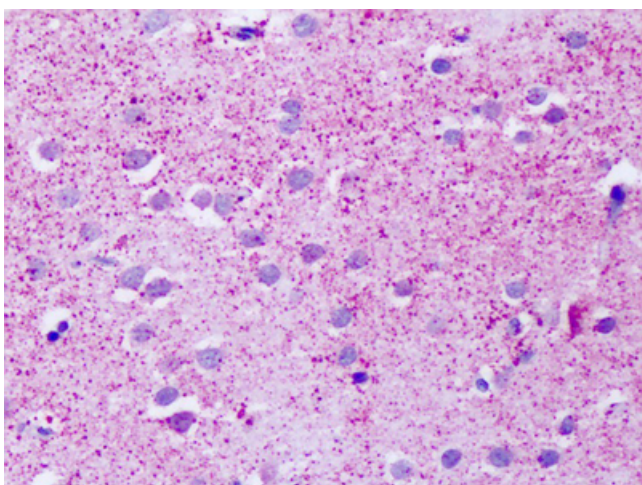
Product Type:	Primary Antibodies
Applications:	IHC
Recommended Dilution:	IHC-P (6 - 14 µg/ml)
Reactivity:	Human (Predicted: Hamster)
Host:	Rabbit
Clonality:	Polyclonal
Immunogen:	GPR139 antibody was raised against synthetic 16 amino acid peptide from 3rd cytoplasmic domain of human GPR139. Percent identity with other species by BLAST analysis: Human, Gorilla, Gibbon, Monkey, Marmoset, Mouse, Rat, Elephant, Panda, Dog, Bovine, Horse, Rabbit, Opossum, Turkey, Chicken, Platypus (100%); Hamster (94%); Pig, Pufferfish (88%); Zebrafish (81%).
Formulation:	PBS, 0.1% sodium azide.
Concentration:	lot specific
Purification:	Immunoaffinity purified
Conjugation:	Unconjugated
Storage:	Store at -20°C as received.
Stability:	Stable for 12 months from date of receipt.
Gene Name:	G protein-coupled receptor 139
Database Link:	NP_001002911 Entrez Gene 124274 Human Q6DWJ6
Synonyms:	GPRg1; PGR3
Protein Families:	Druggable Genome, Transmembrane



[View online »](#)

Product images:

Anti-GPR139 antibody IHC of human adrenal medulla. Immunohistochemistry of formalin-fixed, paraffin-embedded tissue after heat-induced antigen retrieval. Antibody dilution 6-14 ug/ml.



Human, Brain, Cortex, Neurons: Formalin-Fixed Paraffin-Embedded (FFPE)