

## Product datasheet for **TA340645**

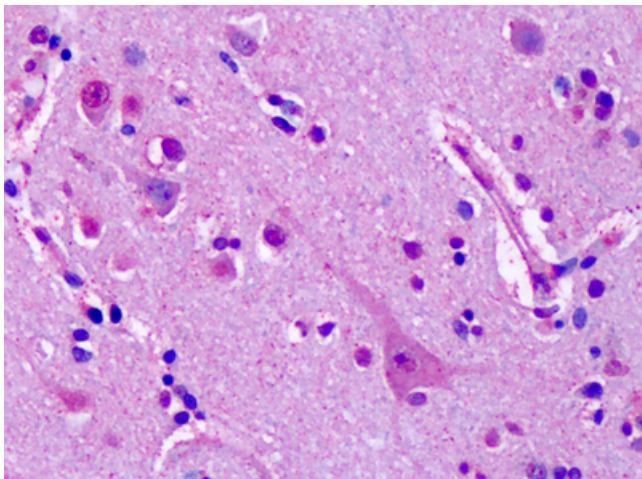
### Metabotropic Glutamate Receptor 7 (GRM7) Rabbit Polyclonal Antibody

#### Product data:

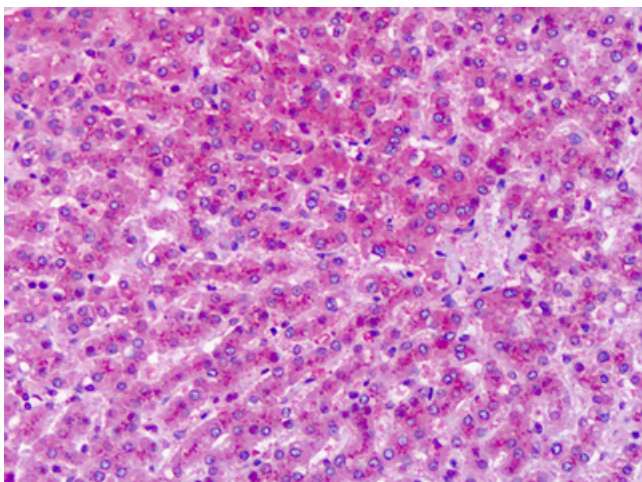
Product Type:	Primary Antibodies
Applications:	IHC
Recommended Dilution:	IHC-P (10 µg/ml)
Reactivity:	Human (Predicted: Chicken)
Host:	Rabbit
Clonality:	Polyclonal
Immunogen:	GRM7 / MGLUR7 antibody was raised against synthetic 15 amino acid peptide from 2nd extracellular domain of human GRM7 / MGLUR7. Percent identity with other species by BLAST analysis: Human, Chimpanzee, Gorilla, Orangutan, Gibbon, Monkey, Marmoset, Mouse, Rat, Dolphin, Elephant, Panda, Bovine, Dog, Horse, Rabbit, Pig (100%); Opossum, Turkey, Chicken (93%).
Formulation:	PBS, 0.1% sodium azide.
Concentration:	lot specific
Purification:	Immunoaffinity purified
Conjugation:	Unconjugated
Storage:	Store at -20°C as received.
Stability:	Stable for 12 months from date of receipt.
Gene Name:	glutamate metabotropic receptor 7
Database Link:	<a href="#">NP_000835</a> <a href="#">Entrez Gene 2917 Human</a> <a href="#">Q14831</a>
Synonyms:	GLUR7; GPRC1G; MGLU7; MGLUR7; PPP1R87
Protein Families:	Druggable Genome, GPCR, Transmembrane
Protein Pathways:	Neuroactive ligand-receptor interaction



[View online »](#)

**Product images:**

Anti-GRM7 / MGLUR7 antibody IHC of human brain, cortex, neurons. Immunohistochemistry of formalin-fixed, paraffin-embedded tissue after heat-induced antigen retrieval. Antibody dilution 10 ug/ml.



Anti-GRM7 / MGLUR7 antibody IHC of human liver. Immunohistochemistry of formalin-fixed, paraffin-embedded tissue after heat-induced antigen retrieval. Antibody dilution 10 ug/ml.