

Product datasheet for **TA340644**

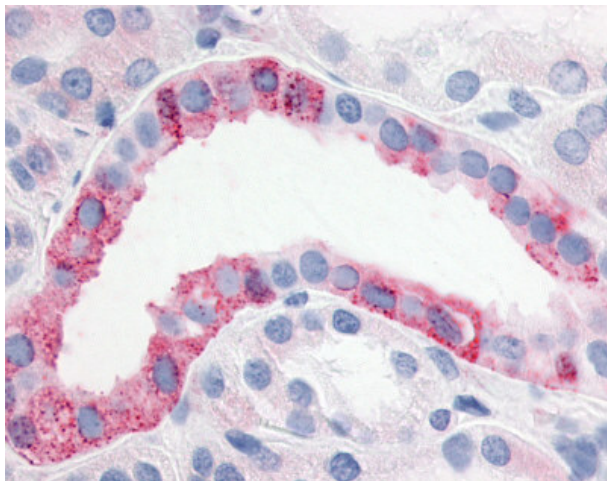
Estrogen Related Receptor gamma (ESRRG) Rabbit Polyclonal Antibody

Product data:

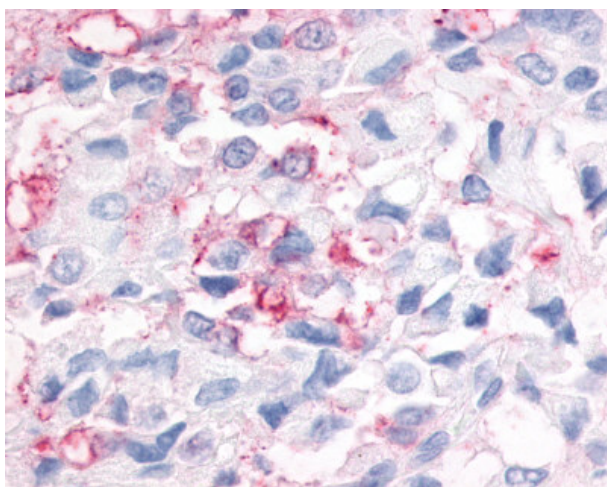
Product Type:	Primary Antibodies
Applications:	IHC
Recommended Dilution:	IHC-P (34 - 68 µg/ml)
Reactivity:	Human
Host:	Rabbit
Clonality:	Polyclonal
Immunogen:	ESRRG / ERR Gamma antibody was raised against synthetic 16 amino acid peptide from near N-terminus of human ESRRG / ERR3. Percent identity with other species by BLAST analysis: Human, Gorilla, Orangutan, Gibbon, Monkey, Marmoset, Mouse, Rat, Bovine, Dog, Bat, Hamster, Elephant, Panda, Horse, Rabbit, Opossum, Turkey, Chicken, Platypus, Lizard, Xenopus, Zebrafish (100%); Medaka, Pufferfish, Stickleback (94%).
Formulation:	PBS, 0.1% sodium azide.
Concentration:	lot specific
Purification:	Immunoaffinity purified
Conjugation:	Unconjugated
Storage:	Store at -20°C as received.
Stability:	Stable for 12 months from date of receipt.
Gene Name:	estrogen related receptor gamma
Database Link:	NP_001429 Entrez Gene 2104 Human P62508
Synonyms:	ERR3; ERRgamma; NR3B3
Protein Families:	Druggable Genome, Nuclear Hormone Receptor, Transcription Factors



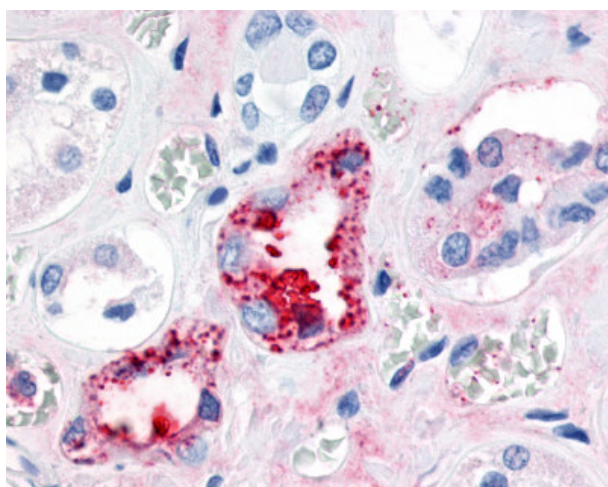
[View online »](#)

Product images:

Anti-ESRRG / ERR Gamma antibody IHC of human kidney. Immunohistochemistry of formalin-fixed, paraffin-embedded tissue after heat-induced antigen retrieval.



Anti-ESRRG / ERR3 antibody IHC of human breast cancer. Immunohistochemistry of formalin-fixed, paraffin-embedded tissue after heat-induced antigen retrieval.



Anti-ESRRG / ERR Gamma antibody IHC of human kidney, diabetes. Immunohistochemistry of formalin-fixed, paraffin-embedded tissue after heat-induced antigen retrieval.