

Product datasheet for **TA340642**

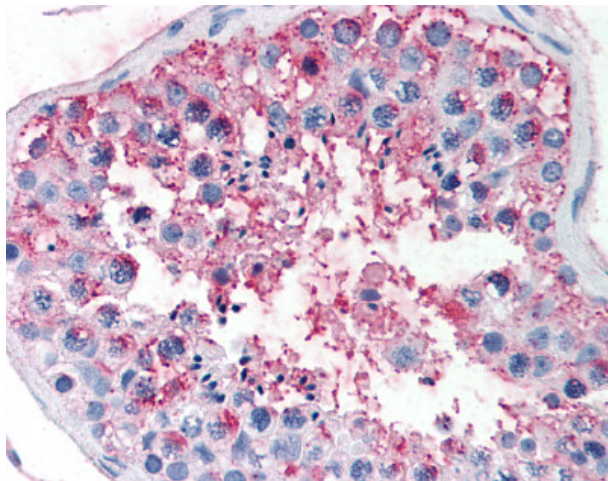
FSH Receptor (FSHR) Rabbit Polyclonal Antibody

Product data:

Product Type:	Primary Antibodies
Applications:	IHC
Recommended Dilution:	IHC-P (7 - 14 µg/ml)
Reactivity:	Human (Predicted: Bat, Dog, Horse, Pig, Rabbit, Guinea Pig)
Host:	Rabbit
Clonality:	Polyclonal
Immunogen:	FSH Receptor / FSHR antibody was raised against synthetic 17 amino acid peptide from N-terminal extracellular domain of human FSHR. Percent identity with other species by BLAST analysis: Human, Gorilla, Monkey, Marmoset (100%); Gibbon, Dog, Bat, Elephant, Rabbit, Horse, Pig, Guinea pig (94%); Bovine, Cat, Goat (88%); Mouse, Rat, Sheep (82%).
Formulation:	PBS, 0.1% sodium azide.
Concentration:	lot specific
Purification:	Immunoaffinity purified
Conjugation:	Unconjugated
Storage:	Store at -20°C as received.
Stability:	Stable for 12 months from date of receipt.
Gene Name:	follicle stimulating hormone receptor
Database Link:	NP_000136 Entrez Gene 481367 Dog Entrez Gene 2492 Human P23945
Synonyms:	FSHRO; LGR1; ODG1
Protein Families:	Druggable Genome, ES Cell Differentiation/IPS, GPCR, Transmembrane
Protein Pathways:	Neuroactive ligand-receptor interaction



[View online »](#)

Product images:

Anti-FSHR antibody IHC of human testis.
Immunohistochemistry of formalin-fixed,
paraffin-embedded tissue after heat-induced
antigen retrieval.