

Product datasheet for **TA340637**

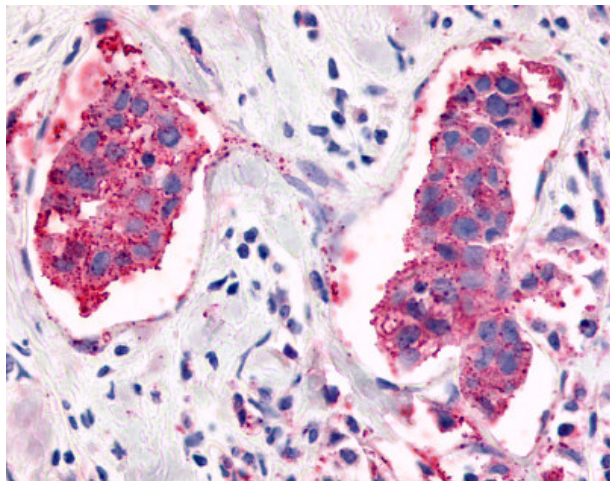
ETL (ADGRL4) Rabbit Polyclonal Antibody

Product data:

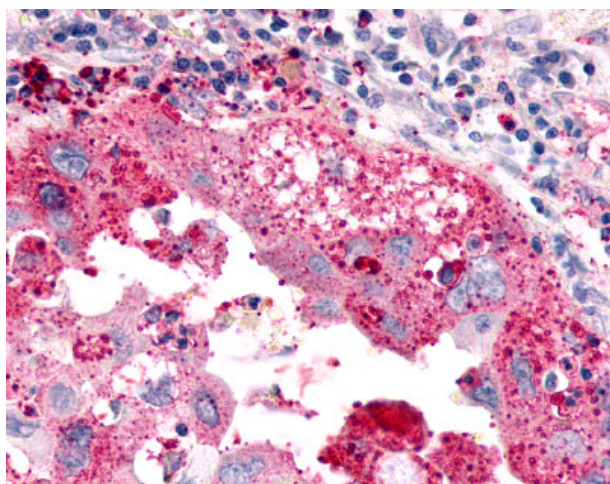
Product Type:	Primary Antibodies
Applications:	IHC
Recommended Dilution:	IHC-P (4 - 11 µg/ml)
Reactivity:	Human (Predicted: Monkey, Bovine, Dog, Xenopus)
Host:	Rabbit
Clonality:	Polyclonal
Immunogen:	ELTD1 antibody was raised against synthetic 19 amino acid peptide from C-terminus of human ELTD1. Percent identity with other species by BLAST analysis: Human, Gorilla, Gibbon, Monkey, Mouse, Rat, Bat, Elephant, Panda, Horse, Rabbit, Pig, Opossum, Turkey, Chicken, Salmon, Stickleback (100%); Marmoset, Dog, Bovine, Xenopus (95%); Zebrafish (89%).
Formulation:	PBS, 0.1% sodium azide.
Concentration:	lot specific
Purification:	Immunoaffinity purified
Conjugation:	Unconjugated
Storage:	Store at -20°C as received.
Stability:	Stable for 12 months from date of receipt.
Gene Name:	adhesion G protein-coupled receptor L4
Database Link:	NP_071442 Entrez Gene 102152304 Dog Entrez Gene 711589 Monkey Entrez Gene 64123 Human Q9HBW9
Synonyms:	ELTD1; ETL; KPG_003
Protein Families:	Druggable Genome, GPCR, Transmembrane



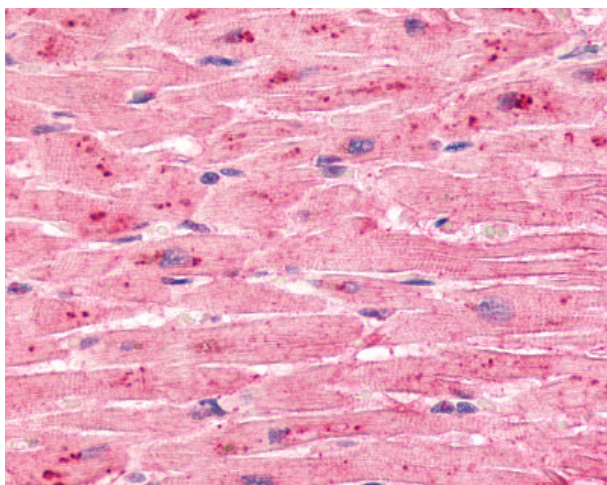
[View online »](#)

Product images:

Anti-ELTD1 antibody IHC of human Breast, Carcinoma. Immunohistochemistry of formalin-fixed, paraffin-embedded tissue after heat-induced antigen retrieval.



Anti-ELTD1 antibody IHC of human Lung, Non-Small Cell Carcinoma. Immunohistochemistry of formalin-fixed, paraffin-embedded tissue after heat-induced antigen retrieval.



Anti-ELTD1 antibody IHC of human heart.
Immunohistochemistry of formalin-fixed,
paraffin-embedded tissue after heat-induced
antigen retrieval.