

Product datasheet for **TA340636**

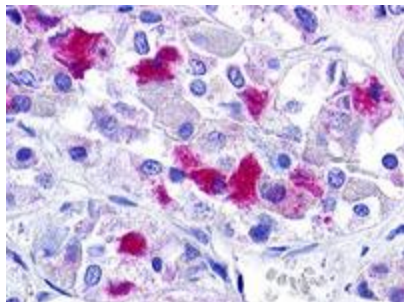
GNRHR Rabbit Polyclonal Antibody

Product data:

Product Type:	Primary Antibodies
Applications:	IHC
Recommended Dilution:	IHC-P (1 - 2 µg/ml)
Reactivity:	Human (Predicted: Monkey, Bovine, Dog, Horse, Pig)
Host:	Rabbit
Clonality:	Polyclonal
Immunogen:	GnRH receptor / GNRHR antibody was raised against synthetic 20 amino acid peptide from 3rd cytoplasmic domain of human GNRHR. Percent identity with other species by BLAST analysis: Human, Gibbon (100%); Gorilla, Monkey, Dog, Elephant, Panda (95%); Marmoset, Bovine, Horse, Pig (90%); Mouse, Rat, Sheep, Bat, Rabbit, Opossum (85%); Hamster, Guinea pig (80%).
Formulation:	PBS, 0.1% sodium azide.
Concentration:	lot specific
Purification:	Immunoaffinity purified
Conjugation:	Unconjugated
Storage:	Store at -20°C as received.
Stability:	Stable for 12 months from date of receipt.
Gene Name:	gonadotropin releasing hormone receptor
Database Link:	NP_000397 Entrez Gene 403718 Dog Entrez Gene 711577 Monkey Entrez Gene 2798 Human P30968
Synonyms:	GNRHR1; GRHR; HH7; LHRHR; LRHR
Protein Families:	Druggable Genome, GPCR, Transmembrane
Protein Pathways:	GnRH signaling pathway, Neuroactive ligand-receptor interaction



[View online »](#)

Product images:

Anti-GNRHR antibody IHC of human pituitary. Immunohistochemistry of formalin-fixed, paraffin-embedded tissue after heat-induced antigen retrieval.