

Product datasheet for **TA340635**

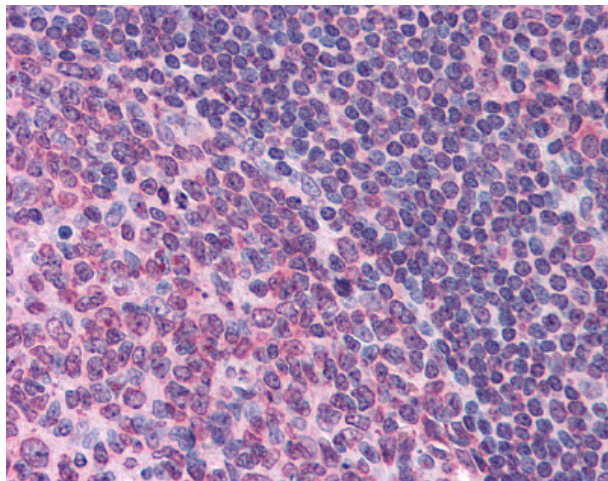
FPR1 Rabbit Polyclonal Antibody

Product data:

Product Type:	Primary Antibodies
Applications:	IHC
Recommended Dilution:	IHC-P (2 µg/ml)
Reactivity:	Human
Host:	Rabbit
Clonality:	Polyclonal
Immunogen:	FPR1 / FPR antibody was raised against synthetic 16 amino acid peptide from 2nd extracellular domain of human FPR1. Percent identity with other species by BLAST analysis: Human (100%); Chimpanzee, Gorilla (94%); Orangutan (88%); Gibbon (81%).
Formulation:	PBS, 0.1% sodium azide.
Concentration:	lot specific
Purification:	Immunoaffinity purified
Conjugation:	Unconjugated
Storage:	Store at -20°C as received.
Stability:	Stable for 12 months from date of receipt.
Gene Name:	formyl peptide receptor 1
Database Link:	NP_002020 Entrez Gene 2357 Human P21462
Synonyms:	FMLP; FPR
Protein Families:	Druggable Genome, GPCR, Transmembrane
Protein Pathways:	Neuroactive ligand-receptor interaction



[View online »](#)

Product images:

Anti-FPR1 antibody IHC of human tonsil.
Immunohistochemistry of formalin-fixed,
paraffin-embedded tissue after heat-induced
antigen retrieval.