

## Product datasheet for **TA340633**

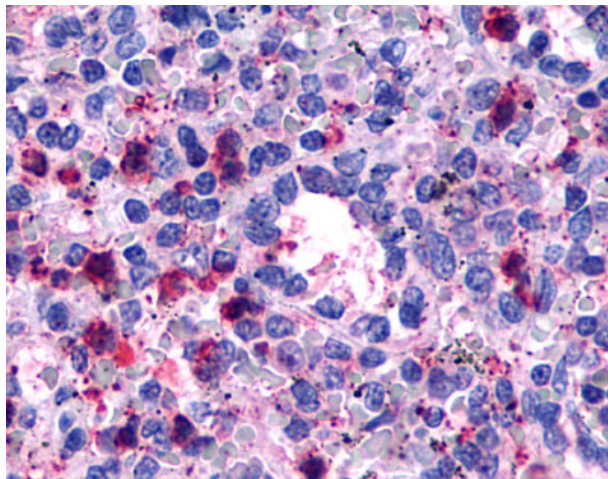
### GPR146 Rabbit Polyclonal Antibody

#### Product data:

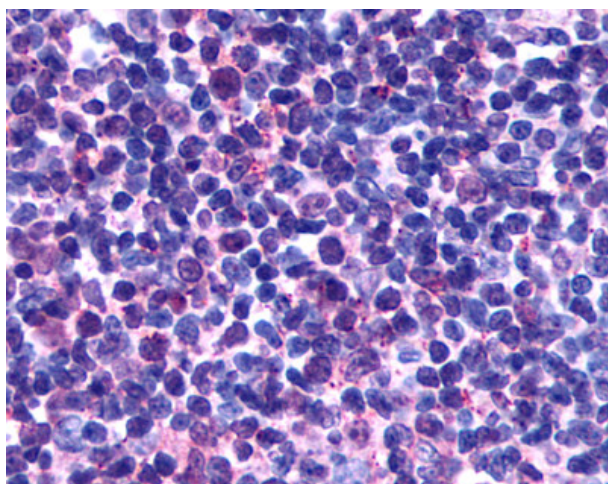
Product Type:	Primary Antibodies
Applications:	IHC
Recommended Dilution:	IHC-P (10 - 20 µg/ml)
Reactivity:	Human (Predicted: Monkey)
Host:	Rabbit
Clonality:	Polyclonal
Immunogen:	GPR146 antibody was raised against synthetic 20 amino acid peptide from 3rd cytoplasmic domain of human GPR146. Percent identity with other species by BLAST analysis: Human, Gorilla, Gibbon, Monkey (100%); Marmoset (95%); Mouse, Rat, Bovine, Dog, Bat, Hamster, Panda, Horse, Opossum, Turkey, Chicken (80%).
Formulation:	PBS, 0.1% sodium azide.
Concentration:	lot specific
Purification:	Immunoaffinity purified
Conjugation:	Unconjugated
Storage:	Store at -20°C as received.
Stability:	Stable for 12 months from date of receipt.
Gene Name:	G protein-coupled receptor 146
Database Link:	<a href="#">NP_612454</a> <a href="#">Entrez Gene 696750 Monkey</a> <a href="#">Entrez Gene 115330 Human</a> <a href="#">Q96CH1</a>
Synonyms:	PGR8
Protein Families:	Druggable Genome, GPCR, Transmembrane



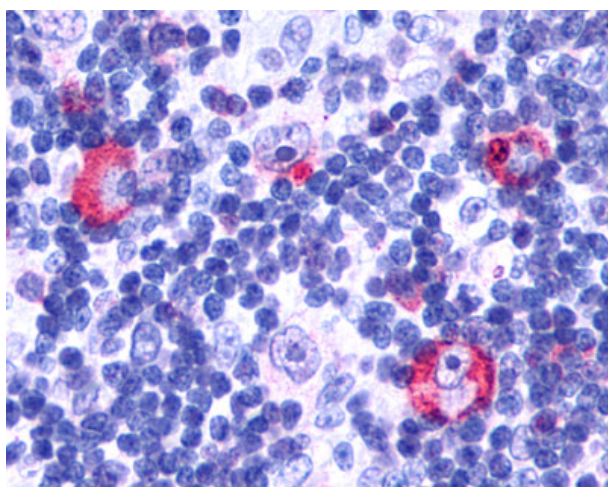
[View online »](#)

**Product images:**

Anti-GPR146 antibody IHC of human spleen. Immunohistochemistry of formalin-fixed, paraffin-embedded tissue after heat-induced antigen retrieval.



Anti-GPR146 antibody IHC of human Lymph Node, Non-Hodgkins Lymphoma. Immunohistochemistry of formalin-fixed, paraffin-embedded tissue after heat-induced antigen retrieval.



Anti-GPR146 antibody IHC of human Lymph Node, Hodgkins Lymphoma.  
Immunohistochemistry of formalin-fixed, paraffin-embedded tissue after heat-induced antigen retrieval.