

Product datasheet for **TA340632**

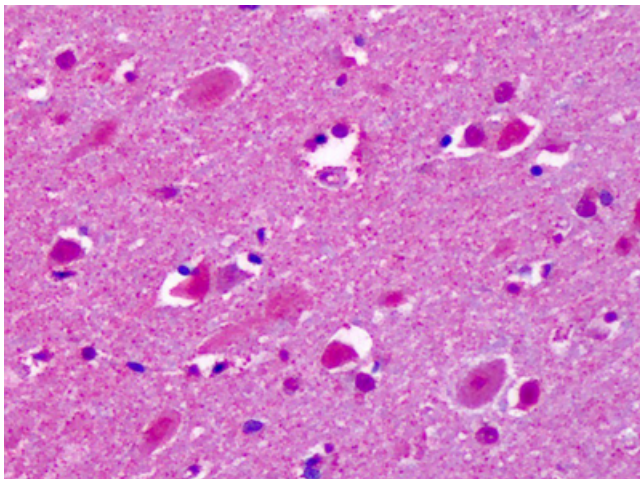
CELSR2 Rabbit Polyclonal Antibody

Product data:

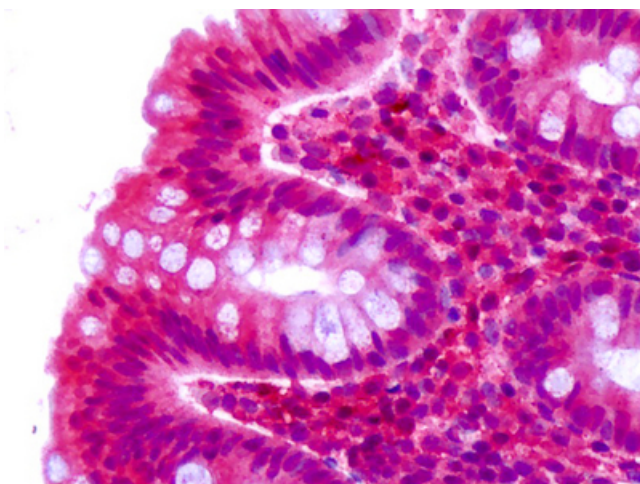
Product Type:	Primary Antibodies
Applications:	IHC
Recommended Dilution:	IHC-P (7 µg/ml)
Reactivity:	Human
Host:	Rabbit
Clonality:	Polyclonal
Immunogen:	CELSR2 antibody was raised against synthetic 18 amino acid peptide from C-terminus of human CELSR2 / EGFL2. Percent identity with other species by BLAST analysis: Human, Gibbon, Monkey, Marmoset, Mouse, Rat, Bovine, Dog, Hamster, Elephant, Panda, Horse, Rabbit (100%); Opossum (94%); Lizard (89%).
Formulation:	PBS, 0.1% sodium azide.
Concentration:	lot specific
Purification:	Immunoaffinity purified
Conjugation:	Unconjugated
Storage:	Store at -20°C as received.
Stability:	Stable for 12 months from date of receipt.
Gene Name:	cadherin EGF LAG seven-pass G-type receptor 2
Database Link:	NP_001399 Entrez Gene 1952 Human Q9HCU4
Synonyms:	ADGRC2; CDHF10; EGFL2; Flamingo1; MEGF3
Protein Families:	Druggable Genome, Transmembrane



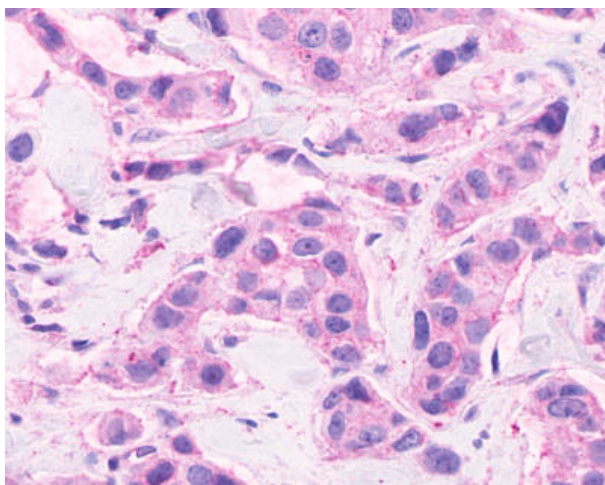
[View online »](#)

Product images:

Anti-CELSR2 antibody IHC of human brain, cortex, neurons. Immunohistochemistry of formalin-fixed, paraffin-embedded tissue after heat-induced antigen retrieval. Antibody dilution 7 ug/ml.



Anti-CELSR2 antibody IHC of human colon, epithelium. Immunohistochemistry of formalin-fixed, paraffin-embedded tissue after heat-induced antigen retrieval. Antibody dilution 7 ug/ml.



Anti-CELSR2 antibody IHC of human Breast, Carcinoma. Immunohistochemistry of formalin-fixed, paraffin-embedded tissue after heat-induced antigen retrieval.