

## Product datasheet for **TA340631**

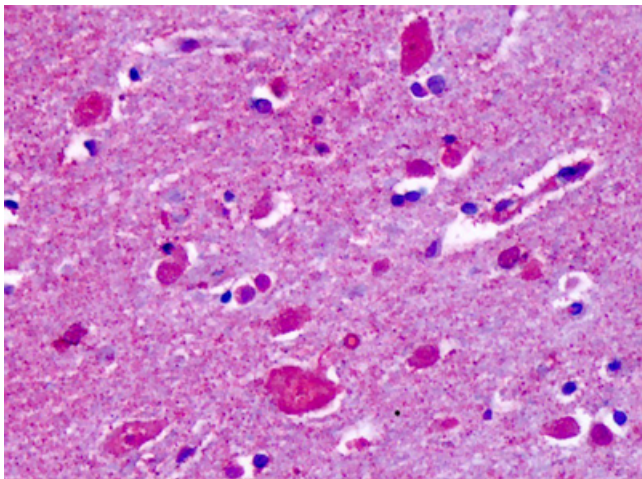
### CELSR2 Rabbit Polyclonal Antibody

#### Product data:

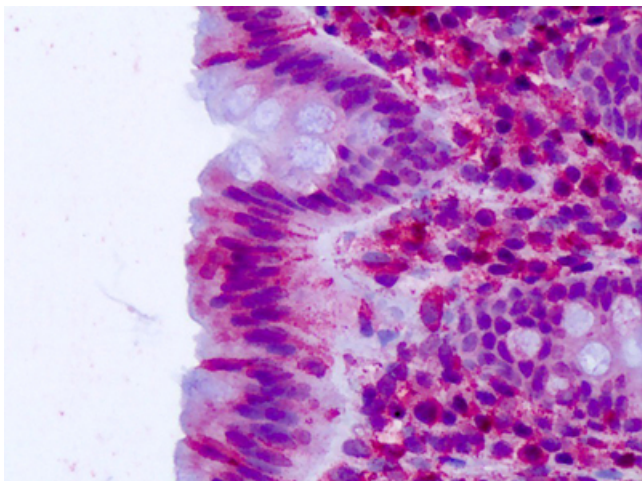
Product Type:	Primary Antibodies
Applications:	IHC
Recommended Dilution:	IHC-P (15 µg/ml)
Reactivity:	Human (Predicted: Rat, Rabbit)
Host:	Rabbit
Clonality:	Polyclonal
Immunogen:	CELSR2 antibody was raised against synthetic 20 amino acid peptide from N-terminal extracellular domain of human CELSR2 / EGFL2. Percent identity with other species by BLAST analysis: Human, Bovine, Dog, Panda (100%); Elephant, Rabbit (95%); Gibbon, Rat (90%); Mouse (85%).
Formulation:	PBS, 0.1% sodium azide.
Concentration:	lot specific
Purification:	Immunoaffinity purified
Conjugation:	Unconjugated
Storage:	Store at -20°C as received.
Stability:	Stable for 12 months from date of receipt.
Gene Name:	cadherin EGF LAG seven-pass G-type receptor 2
Database Link:	<a href="#">NP_001399</a> <a href="#">Entrez Gene 83465 Rat</a> <a href="#">Entrez Gene 1952 Human</a> <a href="#">Q9HCU4</a>
Synonyms:	ADGRC2; CDHF10; EGFL2; Flamingo1; MEGF3
Protein Families:	Druggable Genome, Transmembrane

[View online »](#)

## Product images:



Anti-CELSR2 antibody IHC of human brain, cortex, cerebellum. Immunohistochemistry of formalin-fixed, paraffin-embedded tissue after heat-induced antigen retrieval. Antibody concentration 3-5 ug/ml.



Anti-CELSR2 antibody IHC of human colon, epithelium. Immunohistochemistry of formalin-fixed, paraffin-embedded tissue after heat-induced antigen retrieval. Antibody concentration 3-5 ug/ml.