

Product datasheet for **TA340630**

GPBAR1 Rabbit Polyclonal Antibody

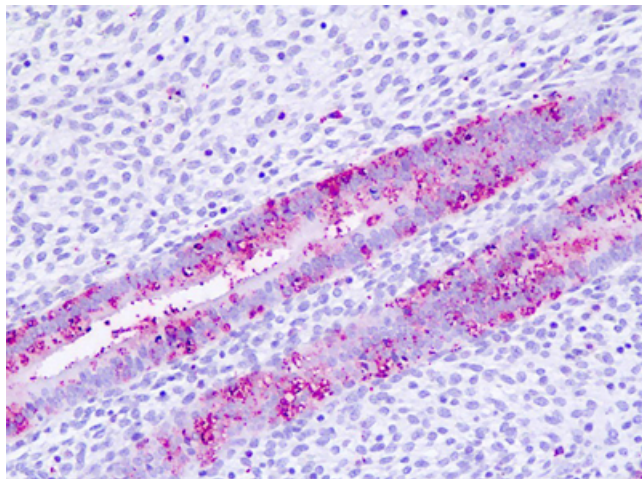
Product data:

Product Type:	Primary Antibodies
Applications:	IHC
Recommended Dilution:	IHC-P (9 µg/ml)
Reactivity:	Human (Predicted: Monkey, Rabbit)
Host:	Rabbit
Clonality:	Polyclonal
Immunogen:	GPBAR1 / TGR5 antibody was raised against synthetic 18 amino acid peptide from 3rd cytoplasmic domain of human TGR5. Percent identity with other species by BLAST analysis: Human, Gorilla, Gibbon (100%); Monkey, Marmoset, Rabbit (94%); Mouse, Rat, Bat, Bovine, Hamster, Elephant, Horse, Opossum (89%); Dog (83%).
Formulation:	PBS, 0.1% sodium azide.
Concentration:	lot specific
Purification:	Immunoaffinity purified
Conjugation:	Unconjugated
Storage:	Store at -20°C as received.
Stability:	Stable for 12 months from date of receipt.
Gene Name:	G protein-coupled bile acid receptor 1
Database Link:	NP_733800 Entrez Gene 697937 Monkey Entrez Gene 151306 Human Q8TDU6
Synonyms:	BG37; GPCR19; GPR131; M-BAR; TGR5
Protein Families:	Druggable Genome



[View online »](#)

Product images:



Human Uterus, Endometrium: Formalin-Fixed, Paraffin-Embedded (FFPE)