

## Product datasheet for **TA340629**

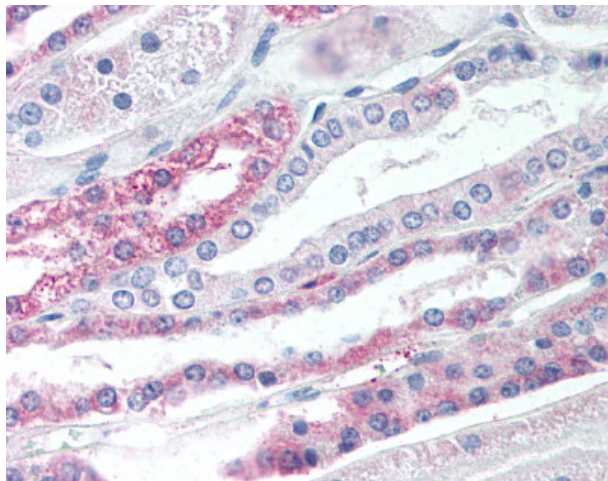
### GPBAR1 Rabbit Polyclonal Antibody

#### Product data:

Product Type:	Primary Antibodies
Applications:	IHC
Recommended Dilution:	IHC-P (18 µg/ml)
Reactivity:	Human (Predicted: Monkey, Horse, Rabbit)
Host:	Rabbit
Clonality:	Polyclonal
Immunogen:	GPBAR1 / TGR5 antibody was raised against synthetic 16 amino acid peptide from 1st cytoplasmic domain of human TGR5. Percent identity with other species by BLAST analysis: Human, Gorilla, Gibbon, Marmoset, Elephant (100%); Monkey, Rabbit, Horse (94%); Mouse, Bat, Bovine, Hamster (88%); Rat, Dog, Opossum (81%).
Formulation:	PBS, 0.1% sodium azide.
Concentration:	lot specific
Purification:	Immunoaffinity purified
Conjugation:	Unconjugated
Storage:	Store at -20°C as received.
Stability:	Stable for 12 months from date of receipt.
Gene Name:	G protein-coupled bile acid receptor 1
Database Link:	<a href="#">NP_733800</a> <a href="#">Entrez Gene 697937 Monkey</a> <a href="#">Entrez Gene 151306 Human</a> <a href="#">Q8TDU6</a>
Synonyms:	BG37; GPCR19; GPR131; M-BAR; TGR5
Protein Families:	Druggable Genome



[View online »](#)

**Product images:**

Anti-TGR5 antibody IHC of human kidney. Immunohistochemistry of formalin-fixed, paraffin-embedded tissue after heat-induced antigen retrieval.