

Product datasheet for **TA340627**

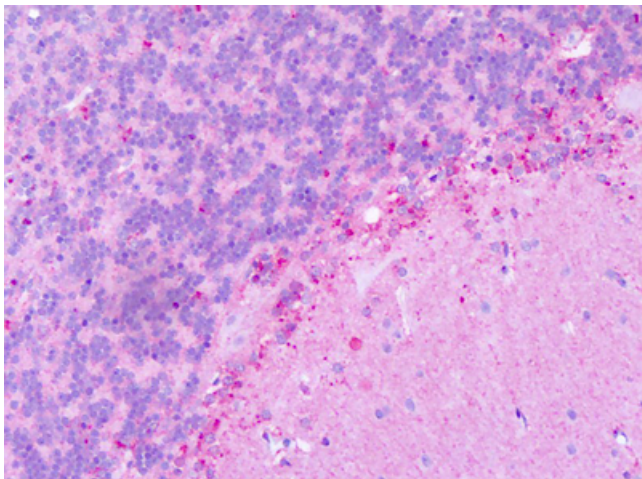
KISS1 receptor (KISS1R) Rabbit Polyclonal Antibody

Product data:

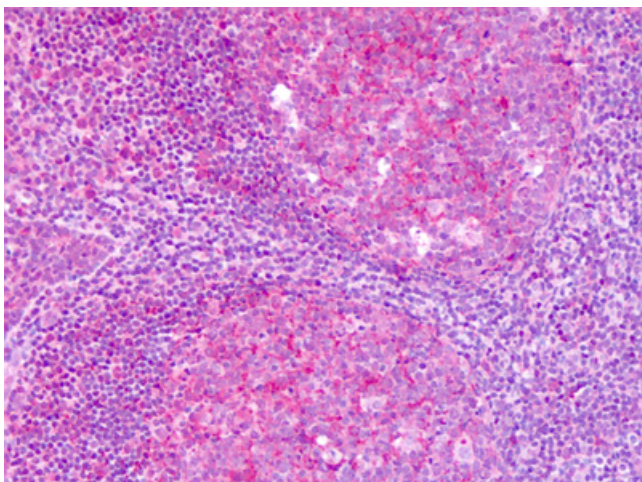
Product Type:	Primary Antibodies
Applications:	IHC
Recommended Dilution:	IHC-P (3 - 5 µg/ml)
Reactivity:	Human (Predicted: Monkey)
Host:	Rabbit
Clonality:	Polyclonal
Immunogen:	KISS1R / GPR54 antibody was raised against synthetic 20 amino acid peptide from C-terminus of human KISS1R / GPR54. Percent identity with other species by BLAST analysis: Human, Gibbon, Monkey (95%); Marmoset (80%).
Formulation:	PBS, 0.1% sodium azide.
Concentration:	lot specific
Purification:	Immunoaffinity purified
Conjugation:	Unconjugated
Storage:	Store at -20°C as received.
Stability:	Stable for 12 months from date of receipt.
Gene Name:	KISS1 receptor
Database Link:	NP_115940 Entrez Gene 574305 Monkey Entrez Gene 84634 Human Q969F8
Synonyms:	AXOR12; CPPB1; GPR54; HH8; HOT7T175; KISS-1R
Protein Families:	Druggable Genome, GPCR, Transmembrane
Protein Pathways:	Neuroactive ligand-receptor interaction



[View online »](#)

Product images:

Anti-KISS1R / GPR54 antibody IHC of human brain, cerebellum. Immunohistochemistry of formalin-fixed, paraffin-embedded tissue after heat-induced antigen retrieval. Antibody dilution 3-5 ug/ml.



Anti-KISS1R / GPR54 antibody IHC of human tonsil. Immunohistochemistry of formalin-fixed, paraffin-embedded tissue after heat-induced antigen retrieval. Antibody dilution 3-5 ug/ml.