

Product datasheet for **TA340626**

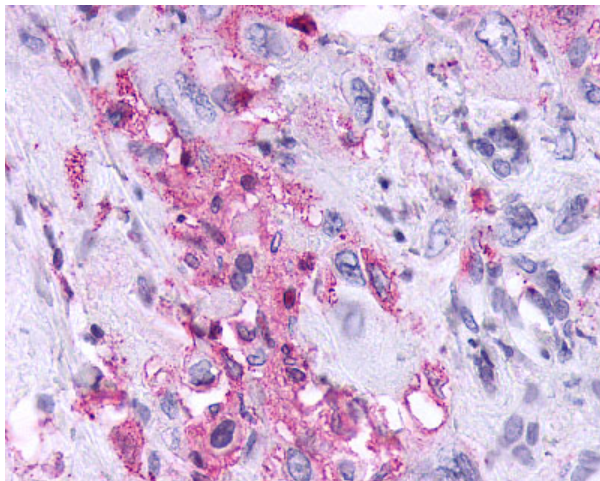
KISS1 receptor (KISS1R) Rabbit Polyclonal Antibody

Product data:

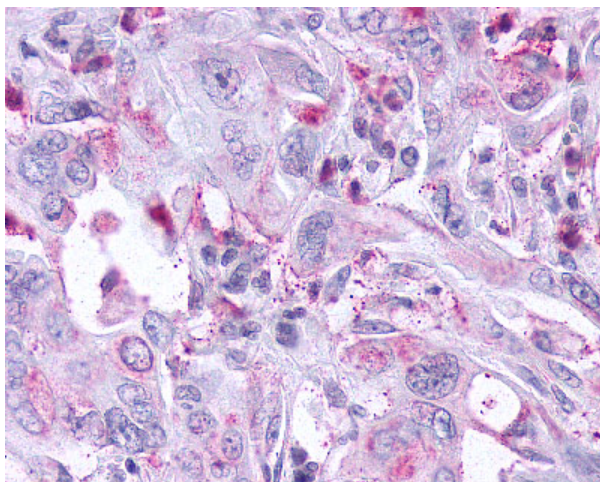
Product Type:	Primary Antibodies
Applications:	IHC
Recommended Dilution:	IHC-P (2.5 - 20 µg/ml)
Reactivity:	Human (Predicted: Monkey, Mouse, Bat, Dog)
Host:	Rabbit
Clonality:	Polyclonal
Immunogen:	KISS1R / GPR54 antibody was raised against synthetic 18 amino acid peptide from 3rd cytoplasmic domain of human KISS1R / GPR54. Percent identity with other species by BLAST analysis: Human, Gorilla, Bovine, Goat, Pig (100%); Monkey, Mouse, Bat, Dog (94%); Gibbon, Marmoset, Rat, Hamster (89%).
Formulation:	PBS, 0.1% sodium azide.
Concentration:	lot specific
Purification:	Immunoaffinity purified
Conjugation:	Unconjugated
Storage:	Store at -20°C as received.
Stability:	Stable for 12 months from date of receipt.
Gene Name:	KISS1 receptor
Database Link:	NP_115940 Entrez Gene 114229 Mouse Entrez Gene 612374 Dog Entrez Gene 574305 Monkey Entrez Gene 84634 Human Q969F8
Synonyms:	AXOR12; CPPB1; GPR54; HH8; HOT7T175; KISS-1R
Protein Families:	Druggable Genome, GPCR, Transmembrane
Protein Pathways:	Neuroactive ligand-receptor interaction



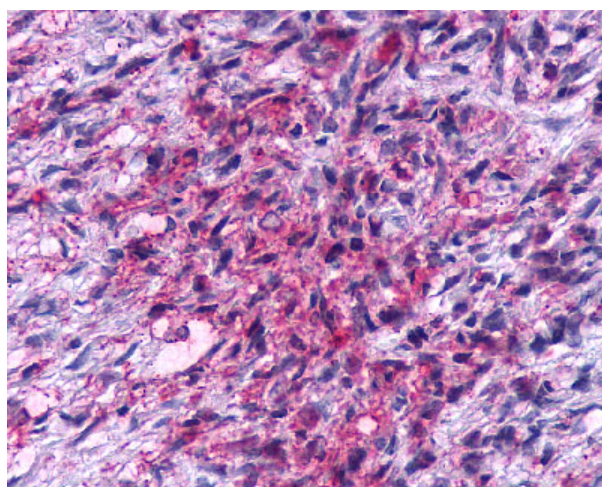
[View online »](#)

Product images:

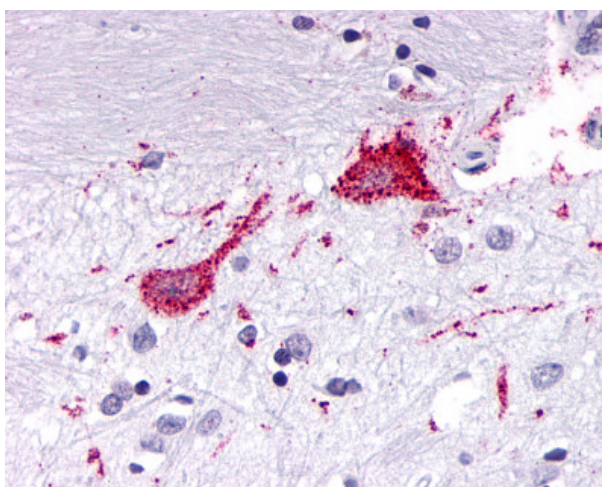
Anti-KISS1R / GPR54 antibody IHC of human Pancreas, Carcinoma. Immunohistochemistry of formalin-fixed, paraffin-embedded tissue after heat-induced antigen retrieval.



Anti-KISS1R / GPR54 antibody IHC of human Pancreas, Carcinoma. Immunohistochemistry of formalin-fixed, paraffin-embedded tissue after heat-induced antigen retrieval.



Anti-KISS1R / GPR54 antibody IHC of human Brain, Glioblastoma. Immunohistochemistry of formalin-fixed, paraffin-embedded tissue after heat-induced antigen retrieval.



Anti-KISS1R / GPR54 antibody IHC of human brain, neurons and glia. Immunohistochemistry of formalin-fixed, paraffin-embedded tissue after heat-induced antigen retrieval.