

## Product datasheet for **TA340624**

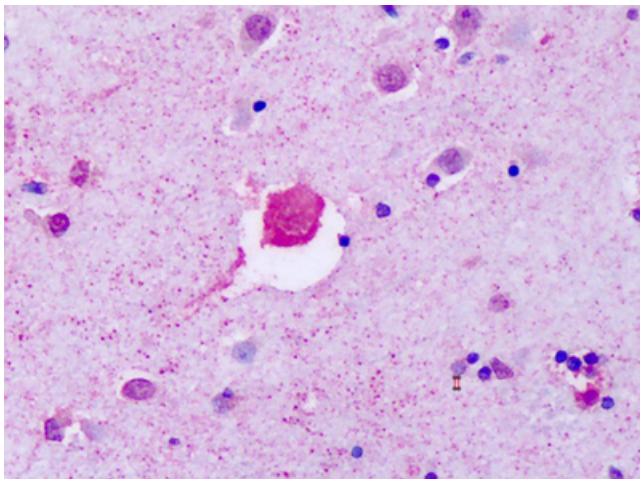
### **P2Y8 (P2RY8) Rabbit Polyclonal Antibody**

#### **Product data:**

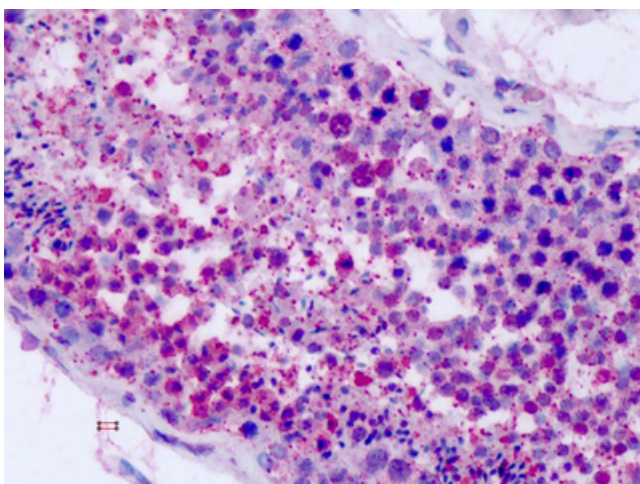
<b>Product Type:</b>	Primary Antibodies
<b>Applications:</b>	IHC
<b>Recommended Dilution:</b>	IHC-P (11 - 21 µg/ml)
<b>Reactivity:</b>	Human
<b>Host:</b>	Rabbit
<b>Clonality:</b>	Polyclonal
<b>Immunogen:</b>	P2RY8 / P2Y8 antibody was raised against synthetic 19 amino acid peptide from 3rd cytoplasmic domain of human P2RY8 / P2Y8. Percent identity with other species by BLAST analysis: Human, Gorilla (100%); Marmoset (84%).
<b>Formulation:</b>	PBS, 0.1% sodium azide.
<b>Concentration:</b>	lot specific
<b>Purification:</b>	Immunoaffinity purified
<b>Conjugation:</b>	Unconjugated
<b>Storage:</b>	Store at -20°C as received.
<b>Stability:</b>	Stable for 12 months from date of receipt.
<b>Gene Name:</b>	purinergic receptor P2Y8
<b>Database Link:</b>	<a href="#">NP_835230</a> <a href="#">Entrez Gene 286530 Human</a> <a href="#">Q86VZ1</a>
<b>Synonyms:</b>	P2Y8
<b>Protein Families:</b>	Druggable Genome, GPCR, Transmembrane
<b>Protein Pathways:</b>	Neuroactive ligand-receptor interaction



[View online »](#)

**Product images:**

Anti-P2RY8 antibody IHC of human brain, cortex. Immunohistochemistry of formalin-fixed, paraffin-embedded tissue after heat-induced antigen retrieval. Antibody concentration 20-40 ug/ml.



Anti-P2RY8 antibody IHC of human testis. Immunohistochemistry of formalin-fixed, paraffin-embedded tissue after heat-induced antigen retrieval. Antibody concentration 20-40 ug/ml.