

Product datasheet for **TA340623**

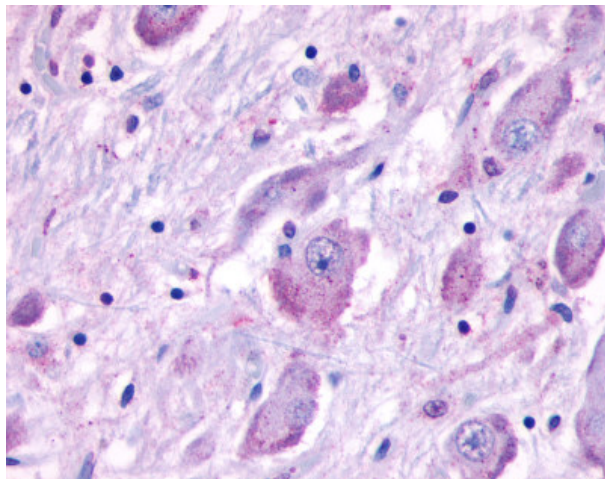
CELSR1 Rabbit Polyclonal Antibody

Product data:

Product Type:	Primary Antibodies
Applications:	IHC
Recommended Dilution:	IHC-P (8 - 15 µg/ml)
Reactivity:	Human
Host:	Rabbit
Clonality:	Polyclonal
Immunogen:	CELSR1 antibody was raised against synthetic 20 amino acid peptide from N-terminal extracellular domain of human CELSR1. Percent identity with other species by BLAST analysis: Human (100%); Monkey (85%).
Formulation:	PBS, 0.1% sodium azide.
Concentration:	lot specific
Purification:	Immunoaffinity purified
Conjugation:	Unconjugated
Storage:	Store at -20°C as received.
Stability:	Stable for 12 months from date of receipt.
Gene Name:	cadherin EGF LAG seven-pass G-type receptor 1
Database Link:	NP_055061 Entrez Gene 9620 Human Q9NYQ6
Synonyms:	ADGRC1; CDHF9; FMI2; HFMI2; ME2
Protein Families:	Druggable Genome, Transmembrane



[View online »](#)

Product images:

Anti-CELSR1 antibody IHC of human brain. Immunohistochemistry of formalin-fixed, paraffin-embedded tissue after heat-induced antigen retrieval.