

Product datasheet for **TA340620**

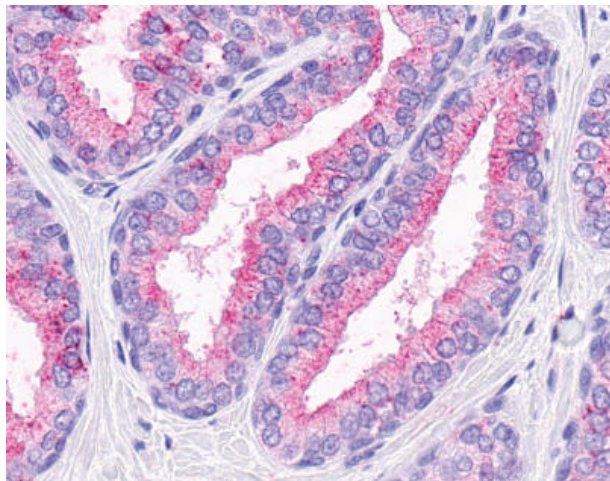
GPR 164 (OR51E1) Rabbit Polyclonal Antibody

Product data:

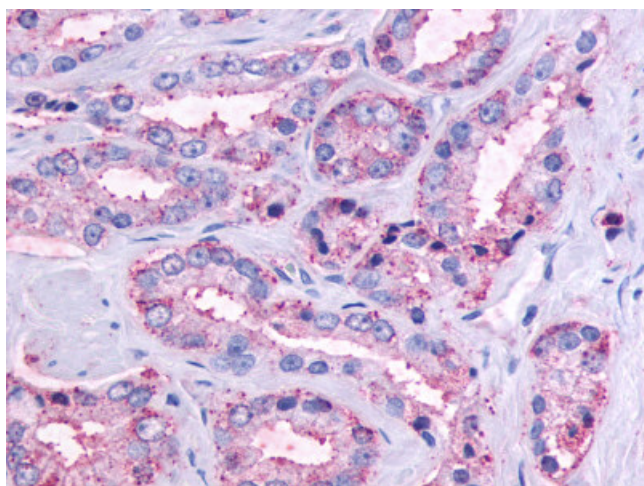
Product Type:	Primary Antibodies
Applications:	IHC
Recommended Dilution:	IHC-P (21 - 32 µg/ml)
Reactivity:	Human (Predicted: Monkey)
Host:	Rabbit
Clonality:	Polyclonal
Immunogen:	OR51E1 antibody was raised against synthetic 19 amino acid peptide from C-terminus of human OR51E1. Percent identity with other species by BLAST analysis: Human, Gorilla (100%); Monkey (95%); Gibbon, Galago (89%); Marmoset, Panda (84%).
Formulation:	PBS, 0.1% sodium azide.
Concentration:	lot specific
Purification:	Immunoaffinity purified
Conjugation:	Unconjugated
Storage:	Store at -20°C as received.
Stability:	Stable for 12 months from date of receipt.
Gene Name:	olfactory receptor family 51 subfamily E member 1
Database Link:	NP_689643 Entrez Gene 717598 Monkey Entrez Gene 143503 Human Q8TCB6
Synonyms:	D-GPCR; DGPCR; GPR136; GPR164; OR51E1P; OR52A3P; POGR; PSGR2
Protein Families:	Druggable Genome, GPCR, Transmembrane
Protein Pathways:	Olfactory transduction



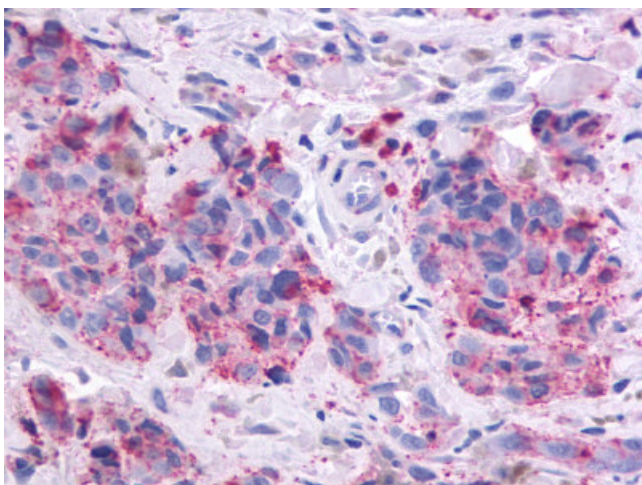
[View online »](#)

Product images:

Anti-OR51E1 antibody IHC of human prostate, glands. Immunohistochemistry of formalin-fixed, paraffin-embedded tissue after heat-induced antigen retrieval.



Anti-OR51E1 antibody IHC of human Prostate, Carcinoma. Immunohistochemistry of formalin-fixed, paraffin-embedded tissue after heat-induced antigen retrieval.



Anti-OR51E1 antibody IHC of human Skin, Melanoma. Immunohistochemistry of formalin-fixed, paraffin-embedded tissue after heat-induced antigen retrieval.