

Product datasheet for **TA340618**

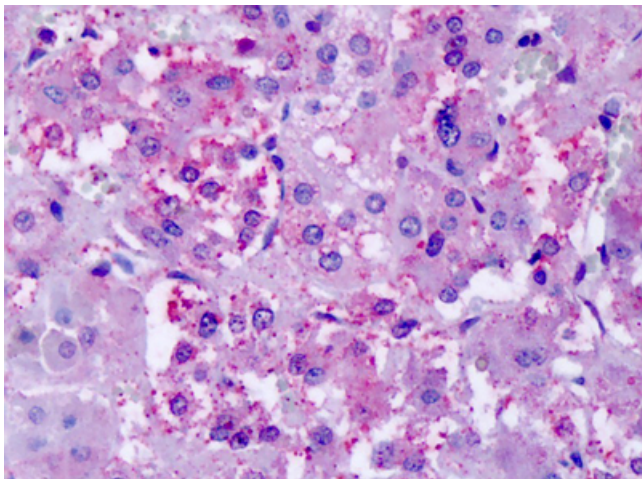
CHRM2 Rabbit Polyclonal Antibody

Product data:

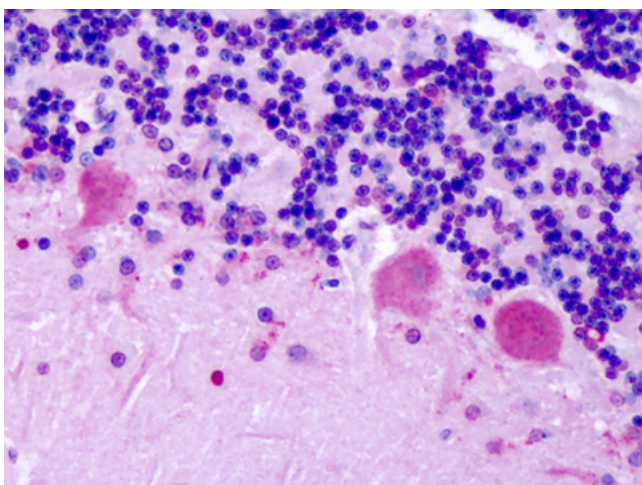
Product Type:	Primary Antibodies
Applications:	IHC
Recommended Dilution:	IHC-P (10 µg/ml)
Reactivity:	Human (Predicted: Mouse, Rat, Bat, Dog, Hamster, Horse, Pig, Guinea Pig)
Host:	Rabbit
Clonality:	Polyclonal
Immunogen:	CHRM2 / M2 antibody was raised against synthetic 20 amino acid peptide from 3rd cytoplasmic domain of human CHRM2. Percent identity with other species by BLAST analysis: Human, Chimpanzee, Gorilla, Orangutan, Gibbon, Marmoset, Sheep, Bovine, Elephant, Panda, Rabbit, Platypus (100%); Mouse, Rat, Bat, Dog, Hamster, Horse, Pig, Opossum, Guinea pig (95%); Turkey, Chicken (80%).
Formulation:	PBS, 0.1% sodium azide.
Concentration:	lot specific
Purification:	Immunoaffinity purified
Conjugation:	Unconjugated
Storage:	Store at -20°C as received.
Stability:	Stable for 12 months from date of receipt.
Gene Name:	cholinergic receptor muscarinic 2
Database Link:	NP_001006627 Entrez Gene 81645 Rat Entrez Gene 243764 Mouse Entrez Gene 403858 Dog Entrez Gene 1129 Human P08172
Synonyms:	HM2
Protein Families:	Druggable Genome, GPCR, Transmembrane
Protein Pathways:	Calcium signaling pathway, Neuroactive ligand-receptor interaction, Regulation of actin cytoskeleton



[View online »](#)

Product images:

Anti-CHRM2 antibody IHC of human adrenal. Immunohistochemistry of formalin-fixed, paraffin-embedded tissue after heat-induced antigen retrieval. Antibody dilution 10 ug/ml.



Anti-CHRM2 antibody IHC of human brain, cerebellum. Immunohistochemistry of formalin-fixed, paraffin-embedded tissue after heat-induced antigen retrieval. Antibody dilution 10 ug/ml.