

## Product datasheet for **TA340616**

### GPR162 Rabbit Polyclonal Antibody

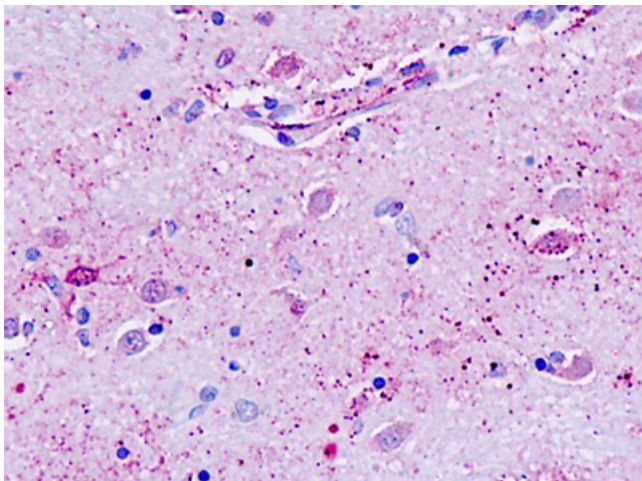
#### Product data:

Product Type:	Primary Antibodies
Applications:	IHC
Recommended Dilution:	IHC-P (6 µg/ml)
Reactivity:	Human (Predicted: Rat, Dog, Pig)
Host:	Rabbit
Clonality:	Polyclonal
Immunogen:	GPR162 antibody was raised against synthetic 19 amino acid peptide from 6th transmembrane domain of human GPR162. Percent identity with other species by BLAST analysis: Human, Monkey (100%); Gibbon, Rat, Dog, Pig (95%); Mouse, Bovine, Hamster, Panda, Horse (89%); Bat, Elephant (84%).
Formulation:	PBS, 0.1% sodium azide.
Concentration:	lot specific
Purification:	Immunoaffinity purified
Conjugation:	Unconjugated
Storage:	Store at -20°C as received.
Stability:	Stable for 12 months from date of receipt.
Gene Name:	G protein-coupled receptor 162
Database Link:	<a href="#">NP_055264</a> <a href="#">Entrez Gene 362436 Rat</a> <a href="#">Entrez Gene 486719 Dog</a> <a href="#">Entrez Gene 27239 Human Q16538</a>
Synonyms:	A-2; GRCA
Protein Families:	Druggable Genome, GPCR, Transmembrane

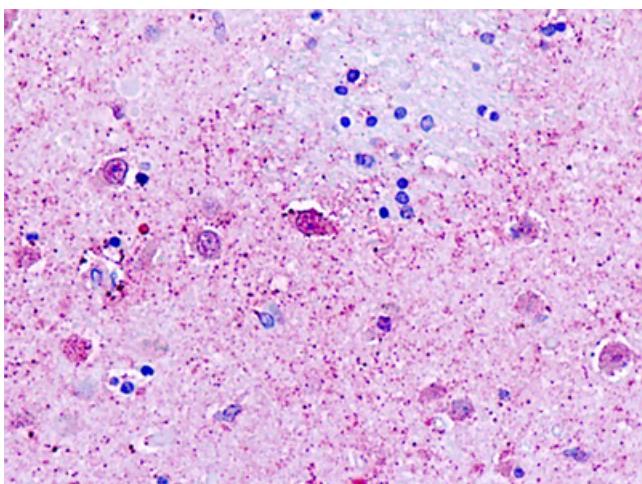


[View online »](#)

**Product images:**



Human, Brain, neurons: Formalin-Fixed Paraffin-Embedded (FFPE)



Human, Brain, neurons: Formalin-Fixed Paraffin-Embedded (FFPE)