

Product datasheet for **TA340605**

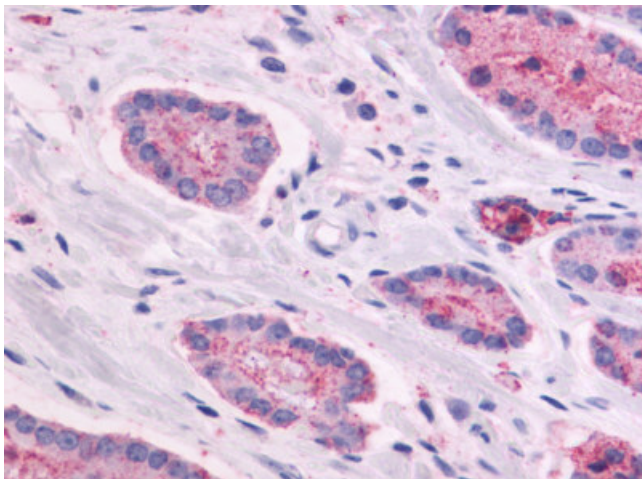
GPR87 Rabbit Polyclonal Antibody

Product data:

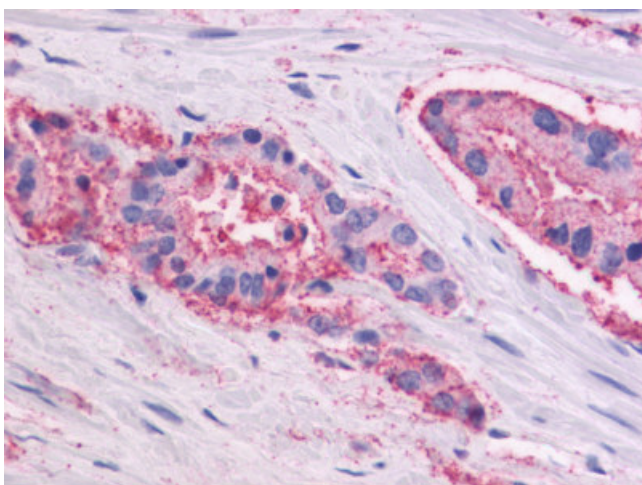
Product Type:	Primary Antibodies
Applications:	IHC
Recommended Dilution:	IHC-P (2 - 4 µg/ml)
Reactivity:	Human
Host:	Rabbit
Clonality:	Polyclonal
Immunogen:	GPR87 antibody was raised against synthetic 19 amino acid peptide from N-terminal extracellular domain of human GPR87. Percent identity with other species by BLAST analysis: Human, Gibbon, Monkey, Marmoset (100%).
Formulation:	PBS, 0.1% sodium azide.
Concentration:	lot specific
Purification:	Immunoaffinity purified
Conjugation:	Unconjugated
Storage:	Store at -20°C as received.
Stability:	Stable for 12 months from date of receipt.
Gene Name:	G protein-coupled receptor 87
Database Link:	NP_076404 Entrez Gene 53836 Human Q9BY21
Synonyms:	FKSG78; GPR95; KPG_002
Protein Families:	Druggable Genome, GPCR, Transmembrane



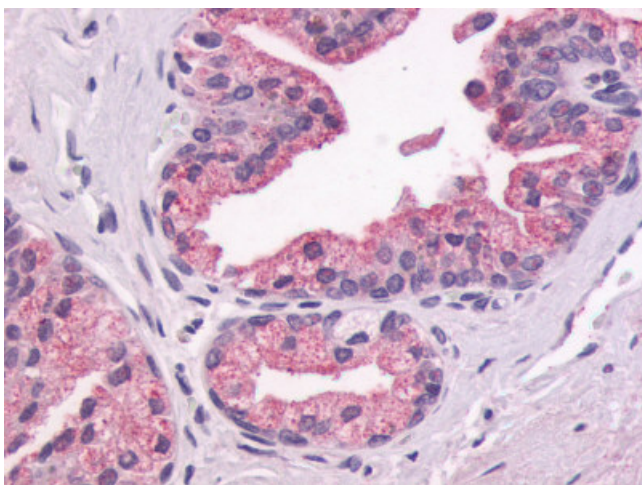
[View online »](#)

Product images:

Anti-GPR87 antibody IHC of human Prostate, Carcinoma. Immunohistochemistry of formalin-fixed, paraffin-embedded tissue after heat-induced antigen retrieval.



Anti-GPR87 antibody IHC of human Prostate, Carcinoma. Immunohistochemistry of formalin-fixed, paraffin-embedded tissue after heat-induced antigen retrieval.



Anti-GPR87 antibody IHC of human prostate, epithelium. Immunohistochemistry of formalin-fixed, paraffin-embedded tissue after heat-induced antigen retrieval.