

Product datasheet for **TA340551**

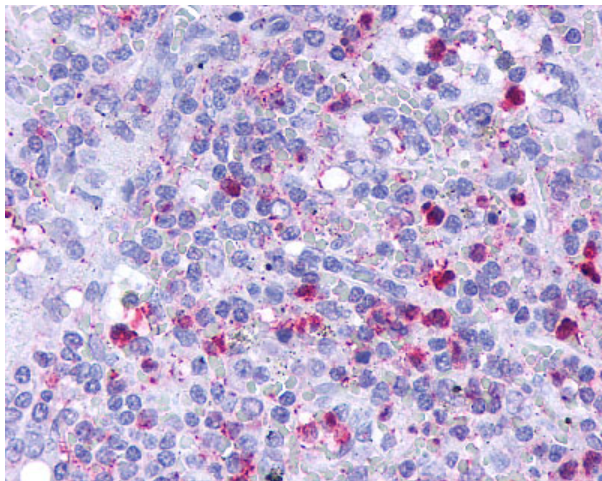
Leukotriene B4 Receptor (LTB4R) Rabbit Polyclonal Antibody

Product data:

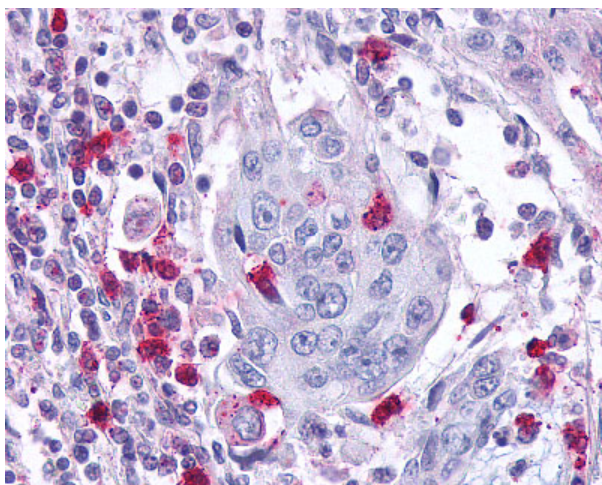
Product Type:	Primary Antibodies
Applications:	IHC
Recommended Dilution:	IHC-P (5 - 10 µg/ml)
Reactivity:	Human
Host:	Rabbit
Clonality:	Polyclonal
Immunogen:	Leukotriene B4 Receptor / BLT1 antibody was raised against synthetic 16 amino acid peptide from 3rd cytoplasmic domain of human Leukotriene B4 Receptor. Percent identity with other species by BLAST analysis: Human, Gorilla, Gibbon, Monkey, Marmoset, Mouse, Rat, Hamster, Horse, Rabbit (100%); Bovine (88%); Opossum, Platypus (81%).
Formulation:	PBS, 0.1% sodium azide.
Concentration:	lot specific
Purification:	Immunoaffinity purified
Conjugation:	Unconjugated
Storage:	Store at -20°C as received.
Stability:	Stable for 12 months from date of receipt.
Gene Name:	leukotriene B4 receptor
Database Link:	NP_858043 Entrez Gene 1241 Human Q15722
Synonyms:	BLT1; BLTR; CMKRL1; GPR16; LTB4R1; LTBR1; P2RY7; P2Y7
Protein Families:	Druggable Genome, GPCR, Transmembrane
Protein Pathways:	Neuroactive ligand-receptor interaction



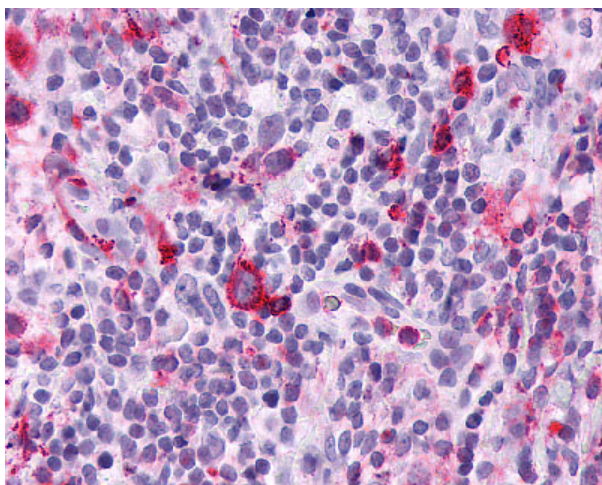
[View online »](#)

Product images:

Anti-Leukotriene B4 Receptor antibody IHC of human spleen, red pulp. Immunohistochemistry of formalin-fixed, paraffin-embedded tissue after heat-induced antigen retrieval.



Anti-Leukotriene B4 Receptor / BLT1 antibody IHC of human Pancreas, Carcinoma and Leukocytes. Immunohistochemistry of formalin-fixed, paraffin-embedded tissue after heat-induced antigen retrieval.



Anti-Leukotriene B4 Receptor / BLT1 antibody IHC of human Lymph Node, Hodgkins Lymphoma. Immunohistochemistry of formalin-fixed, paraffin-embedded tissue after heat-induced antigen retrieval.