

## Product datasheet for **TA340549**

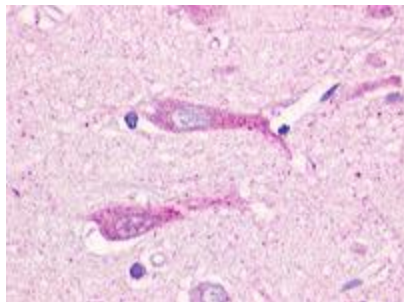
### GPR19 Rabbit Polyclonal Antibody

#### Product data:

Product Type:	Primary Antibodies
Applications:	IHC
Recommended Dilution:	IHC-P (13 - 17 µg/ml)
Reactivity:	Human (Predicted: Mouse, Rat, Hamster, Xenopus, Zebrafish)
Host:	Rabbit
Clonality:	Polyclonal
Immunogen:	GPR19 antibody was raised against synthetic 18 amino acid peptide from 3rd cytoplasmic domain of human GPR19. Percent identity with other species by BLAST analysis: Human, Gorilla, Monkey, Marmoset, Elephant, Panda, Bovine, Bat, Horse, Rabbit, Turkey (100%); Mouse, Rat, Hamster, Xenopus, Zebrafish (94%); Stickleback (89%).
Formulation:	PBS, 0.1% sodium azide.
Concentration:	lot specific
Purification:	Immunoaffinity purified
Conjugation:	Unconjugated
Storage:	Store at -20°C as received.
Stability:	Stable for 12 months from date of receipt.
Gene Name:	G protein-coupled receptor 19
Database Link:	<a href="#">NP_006134</a> <a href="#">Entrez Gene 14760 Mouse</a> <a href="#">Entrez Gene 312787 Rat</a> <a href="#">Entrez Gene 2842 Human</a> <a href="#">Q15760</a>
Synonyms:	G protein-coupled receptor 19
Protein Families:	Druggable Genome, GPCR, Transmembrane



[View online »](#)

**Product images:**

Anti-GPR19 antibody IHC of human brain, neurons and glia. Immunohistochemistry of formalin-fixed, paraffin-embedded tissue after heat-induced antigen retrieval.