

## Product datasheet for **TA340546**

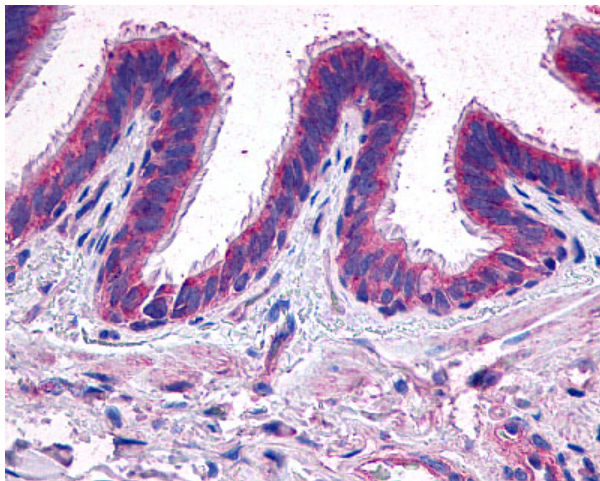
### EP2 (PTGER2) Rabbit Polyclonal Antibody

#### Product data:

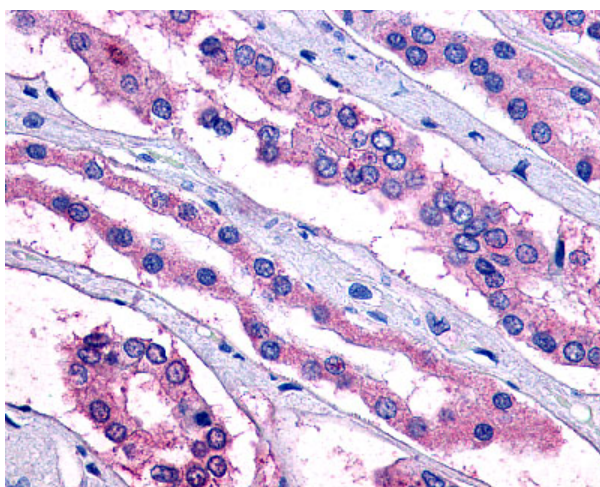
Product Type:	Primary Antibodies
Applications:	IHC
Recommended Dilution:	IHC-P (6 - 15 µg/ml)
Reactivity:	Human (Predicted: Bovine, Dog)
Host:	Rabbit
Clonality:	Polyclonal
Immunogen:	PTGER2 / EP2 antibody was raised against synthetic 16 amino acid peptide from 3rd extracellular domain of human EP2. Percent identity with other species by BLAST analysis: Human, Gorilla, Gibbon, Monkey, Marmoset, Bat (100%); Elephant, Bovine, Dog (94%); Rat, Panda, Pig (88%); Mouse (81%).
Formulation:	PBS, 0.1% sodium azide.
Concentration:	lot specific
Purification:	Immunoaffinity purified
Conjugation:	Unconjugated
Storage:	Store at -20°C as received.
Stability:	Stable for 12 months from date of receipt.
Gene Name:	prostaglandin E receptor 2
Database Link:	<a href="#">NP_000947</a> <a href="#">Entrez Gene 403797 Dog</a> <a href="#">Entrez Gene 5732 Human</a> <a href="#">P43116</a>
Synonyms:	EP2
Protein Families:	Druggable Genome, GPCR, Transmembrane
Protein Pathways:	Neuroactive ligand-receptor interaction



[View online »](#)

**Product images:**

Anti-EP2 antibody IHC of human lung.  
Immunohistochemistry of formalin-fixed,  
paraffin-embedded tissue after heat-induced  
antigen retrieval.



Anti-PTGER2 / EP2 antibody IHC of human kidney.  
Immunohistochemistry of formalin-fixed,  
paraffin-embedded tissue after heat-induced  
antigen retrieval.