

## Product datasheet for **TA340544**

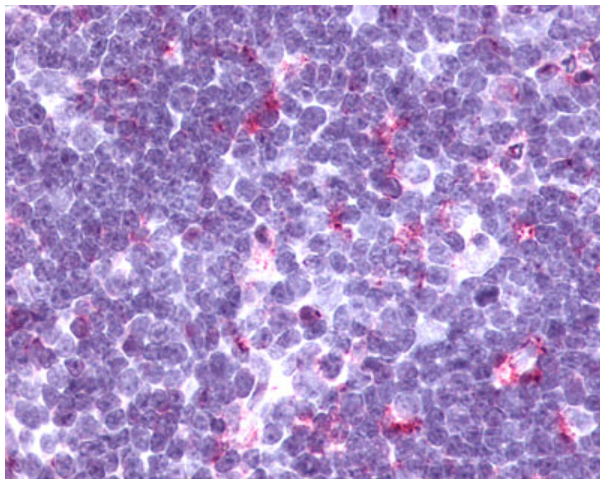
### CCR9 Rabbit Polyclonal Antibody

#### Product data:

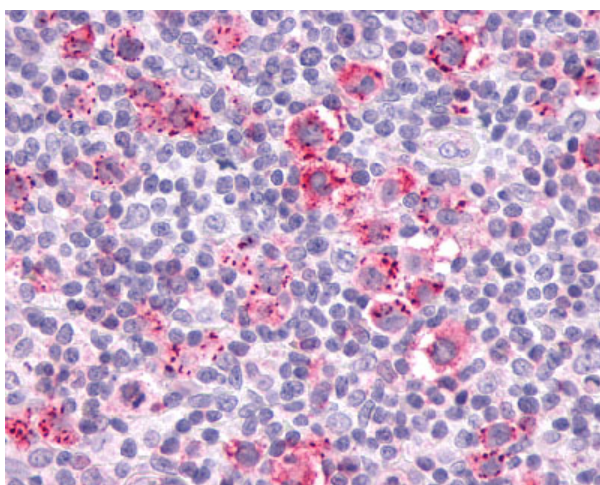
Product Type:	Primary Antibodies
Applications:	IHC
Recommended Dilution:	IHC-P (2 - 4 µg/ml)
Reactivity:	Human (Predicted: Monkey, Dog, Horse)
Host:	Rabbit
Clonality:	Polyclonal
Immunogen:	CCR9 antibody was raised against synthetic 17 amino acid peptide from C-terminus of human CCR9. Percent identity with other species by BLAST analysis: Human, Gorilla, Gibbon, Marmoset, Mouse, Rat, Sheep, Bovine, Bat, Pig (100%); Monkey, Ferret, Panda, Dog, Horse, Opossum (94%); Elephant (88%).
Formulation:	PBS, 0.1% sodium azide.
Concentration:	lot specific
Purification:	Immunoaffinity purified
Conjugation:	Unconjugated
Storage:	Store at -20°C as received.
Stability:	Stable for 12 months from date of receipt.
Gene Name:	C-C motif chemokine receptor 9
Database Link:	<a href="#">NP_006632</a> <a href="#">Entrez Gene 484793 Dog</a> <a href="#">Entrez Gene 713934 Monkey</a> <a href="#">Entrez Gene 10803 Human</a> <a href="#">P51686</a>
Synonyms:	CC-CKR-9; CDw199; GPR-9-6; GPR28
Protein Families:	Druggable Genome, GPCR, Transmembrane
Protein Pathways:	Chemokine signaling pathway, Cytokine-cytokine receptor interaction



[View online »](#)

**Product images:**

Anti-CCR9 antibody IHC of human thymus, lymphocytes. Immunohistochemistry of formalin-fixed, paraffin-embedded tissue after heat-induced antigen retrieval.



Anti-CCR9 antibody IHC of human Lymph Node, Hodgkins Lymphoma. Immunohistochemistry of formalin-fixed, paraffin-embedded tissue after heat-induced antigen retrieval.