

Product datasheet for **TA340540**

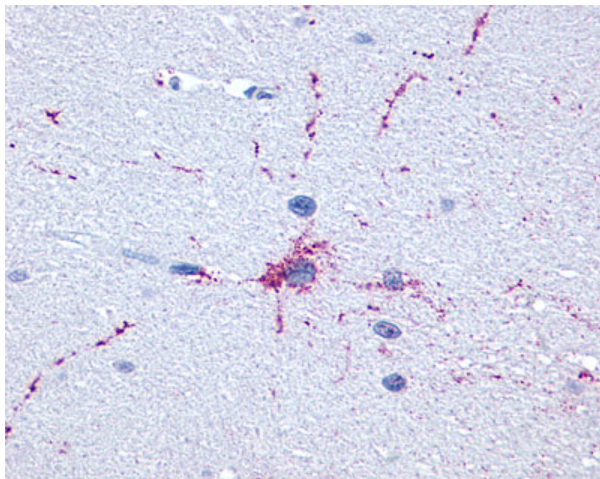
Metabotropic Glutamate Receptor 8 (GRM8) Rabbit Polyclonal Antibody

Product data:

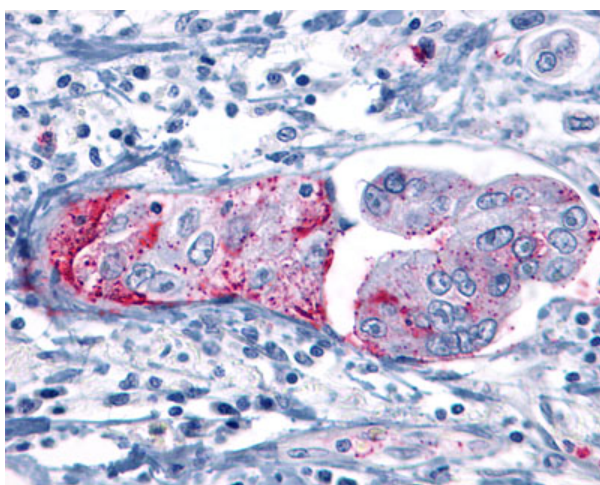
Product Type:	Primary Antibodies
Applications:	IHC
Recommended Dilution:	IHC-P (7 - 18 µg/ml)
Reactivity:	Human (Predicted: Chicken)
Host:	Rabbit
Clonality:	Polyclonal
Immunogen:	GRM8 / MGLUR8 antibody was raised against synthetic 19 amino acid peptide from C-terminus of human GRM8 / MGLUR8. Percent identity with other species by BLAST analysis: Human, Chimpanzee, Baboon, Monkey, Galago, Marmoset, Mouse, Rat, Shrew, Bat, Horse, Armadillo (100%); Opossum, Chicken (95%); Platypus, Xenopus (89%); Stickleback (84%).
Formulation:	PBS, 0.1% sodium azide.
Concentration:	lot specific
Purification:	Immunoaffinity purified
Conjugation:	Unconjugated
Storage:	Store at -20°C as received.
Stability:	Stable for 12 months from date of receipt.
Gene Name:	glutamate metabotropic receptor 8
Database Link:	NP_000836 Entrez Gene 2918 Human O00222
Synonyms:	GLUR8; GPRC1H; mGlu8; MGLUR8
Protein Families:	Druggable Genome, GPCR, Transmembrane
Protein Pathways:	Neuroactive ligand-receptor interaction



[View online »](#)

Product images:

Anti-GRM8 / MGLUR8 antibody IHC of human brain, neurons and glia. Immunohistochemistry of formalin-fixed, paraffin-embedded tissue after heat-induced antigen retrieval.



Anti-GRM8 / MGLUR8 antibody IHC of human Pancreas, Carcinoma. Immunohistochemistry of formalin-fixed, paraffin-embedded tissue after heat-induced antigen retrieval.