

## Product datasheet for **TA340536**

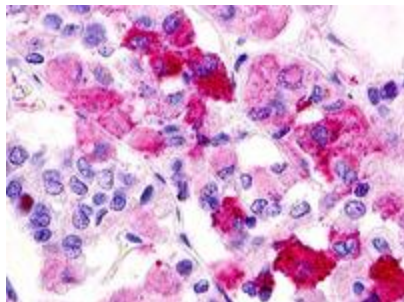
### GPR12 Rabbit Polyclonal Antibody

#### Product data:

Product Type:	Primary Antibodies
Applications:	IHC
Recommended Dilution:	IHC-P (2 - 4 µg/ml), WB (1:1000 - 1:2000)
Reactivity:	Human (Predicted: Mouse, Dog, Pig)
Host:	Rabbit
Clonality:	Polyclonal
Immunogen:	GPR12 antibody was raised against synthetic 16 amino acid peptide from C-terminus of human GPR12 / GPCR12. Percent identity with other species by BLAST analysis: Human, Gorilla, Gibbon, Monkey (100%); Mouse, Panda, Dog, Pig (94%); Hamster, Elephant, Bat, Horse, Rabbit, Opossum, Turkey (88%); Rat, Bovine, Chicken, Platypus, Xenopus, Stickleback (81%).
Formulation:	PBS, 0.1% sodium azide.
Concentration:	lot specific
Purification:	Immunoaffinity purified
Conjugation:	Unconjugated
Storage:	Store at -20°C as received.
Stability:	Stable for 12 months from date of receipt.
Gene Name:	G protein-coupled receptor 12
Database Link:	<a href="#">NP_005279</a> <a href="#">Entrez Gene 14738 Mouse</a> <a href="#">Entrez Gene 486034 Dog</a> <a href="#">Entrez Gene 2835 Human</a> <a href="#">P47775</a>
Synonyms:	GPCR12; GPCR21; PPP1R84
Protein Families:	Druggable Genome, GPCR, Transmembrane



[View online »](#)

**Product images:**

Anti-GPR12 / GPCR12 antibody IHC of human brain, pituitary. Immunohistochemistry of formalin-fixed, paraffin-embedded tissue after heat-induced antigen retrieval.