

Product datasheet for **TA340527**

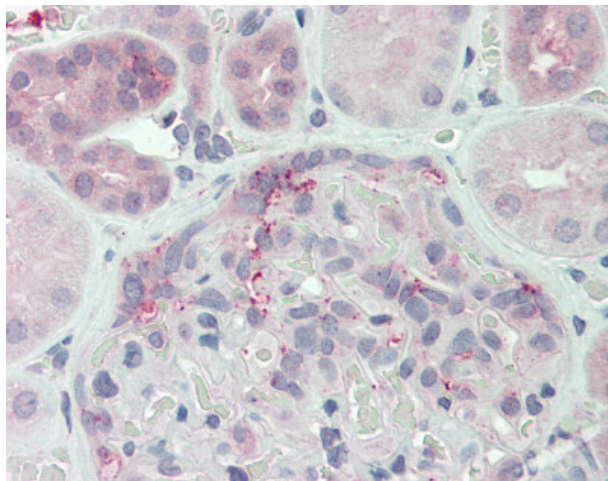
DUSP22 Rabbit Polyclonal Antibody

Product data:

Product Type:	Primary Antibodies
Applications:	IHC
Recommended Dilution:	IHC-P (2 - 22 µg/ml)
Reactivity:	Human (Predicted: Mouse, Rat)
Host:	Rabbit
Clonality:	Polyclonal
Immunogen:	DUSP22 / JSP 1 antibody was raised against synthetic 17 amino acid peptide from near N-terminus of human DUSP22. Percent identity with other species by BLAST analysis: Human, Gorilla, Gibbon, Monkey, Marmoset, Bovine, Horse, Rabbit (100%); Mouse, Rat (94%); Elephant, Chicken (88%); Xenopus (82%).
Formulation:	PBS, 0.1% sodium azide.
Concentration:	lot specific
Purification:	Immunoaffinity purified
Conjugation:	Unconjugated
Storage:	Store at -20°C as received.
Stability:	Stable for 12 months from date of receipt.
Gene Name:	dual specificity phosphatase 22
Database Link:	NP_064570 Entrez Gene 105352 Mouse Entrez Gene 361242 Rat Entrez Gene 56940 Human Q9NRW4
Synonyms:	JKAP; JSP-1; JSP1; LMW-DSP2; LMWDSP2; MKP-x; MKPX; VHX
Protein Families:	Druggable Genome, Phosphatase



[View online »](#)

Product images:

Anti-DUSP22 antibody IHC of human kidney. Immunohistochemistry of formalin-fixed, paraffin-embedded tissue after heat-induced antigen retrieval.