

Product datasheet for **TA340526**

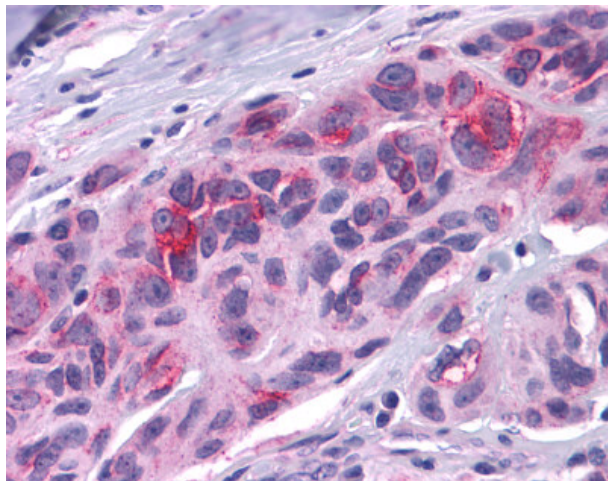
DUSP23 Rabbit Polyclonal Antibody

Product data:

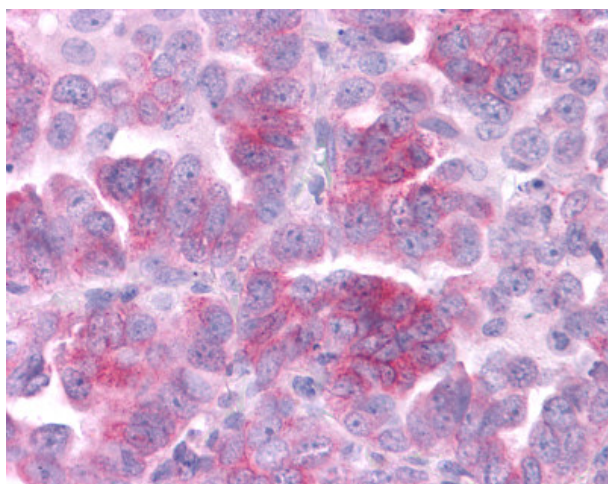
Product Type:	Primary Antibodies
Applications:	IHC
Recommended Dilution:	IHC-P (10 - 20 µg/ml)
Reactivity:	Human (Predicted: Monkey, Horse, Rabbit)
Host:	Rabbit
Clonality:	Polyclonal
Immunogen:	DUSP23 antibody was raised against synthetic 18 amino acid peptide from internal region of human DUSP23. Percent identity with other species by BLAST analysis: Human, Gorilla, Gibbon, Monkey (100%); Marmoset, Horse, Rabbit (94%); Elephant, Bat (89%); Rat, Hamster, Bovine (83%).
Formulation:	PBS, 0.1% sodium azide.
Concentration:	lot specific
Purification:	Immunoaffinity purified
Conjugation:	Unconjugated
Storage:	Store at -20°C as received.
Stability:	Stable for 12 months from date of receipt.
Gene Name:	dual specificity phosphatase 23
Database Link:	NP_060293 Entrez Gene 719474 Monkey Entrez Gene 54935 Human Q9BVJ7
Synonyms:	DUSP25; LDP-3; MOSP; VHZ
Protein Families:	Druggable Genome, Phosphatase



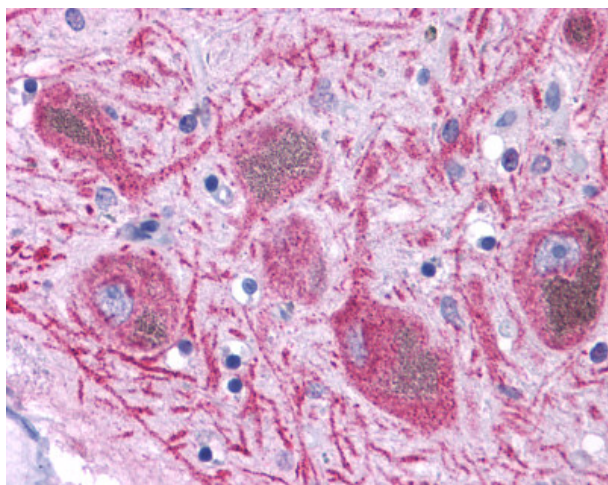
[View online »](#)

Product images:

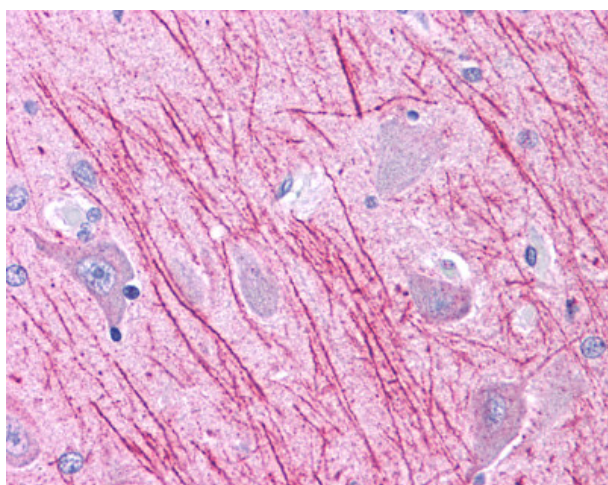
Anti-DUSP23 antibody IHC of human Skin, Melanoma. Immunohistochemistry of formalin-fixed, paraffin-embedded tissue after heat-induced antigen retrieval.



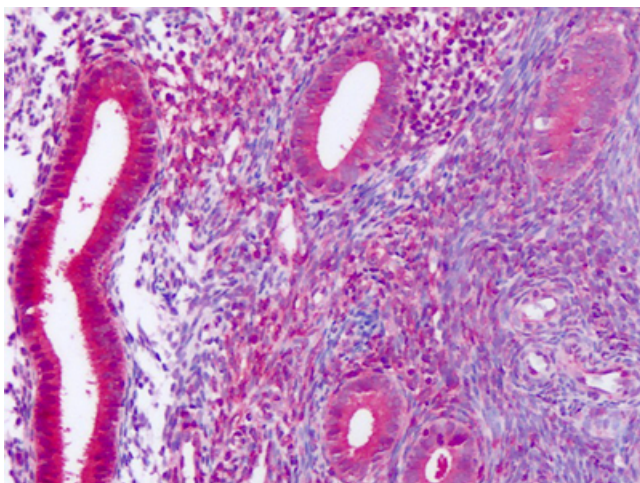
Anti-DUSP23 antibody IHC of human Lung, Non-Small Cell Carcinoma. Immunohistochemistry of formalin-fixed, paraffin-embedded tissue after heat-induced antigen retrieval.



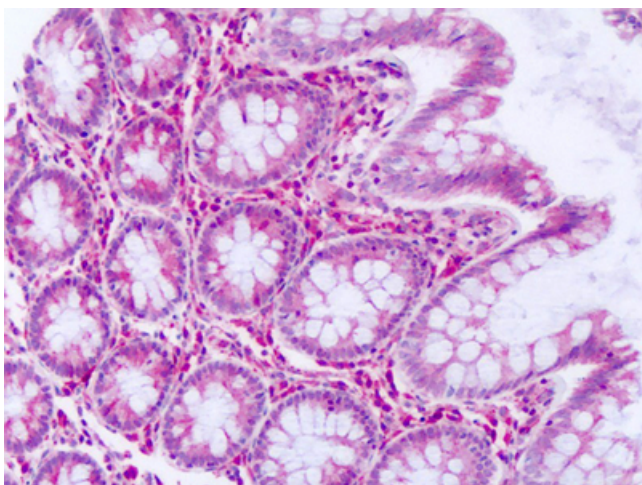
Anti-DUSP23 antibody IHC of human brain, substantia nigra. Immunohistochemistry of formalin-fixed, paraffin-embedded tissue after heat-induced antigen retrieval.



Anti-DUSP23 antibody IHC of human brain, hippocampus. Immunohistochemistry of formalin-fixed, paraffin-embedded tissue after heat-induced antigen retrieval.



Anti-DUSP23 antibody IHC of human uterus, endometrium. Immunohistochemistry of formalin-fixed, paraffin-embedded tissue after heat-induced antigen retrieval. Antibody dilution 10-20 ug/ml.



Anti-DUSP23 antibody IHC of human colon, epithelium. Immunohistochemistry of formalin-fixed, paraffin-embedded tissue after heat-induced antigen retrieval. Antibody dilution 10-20 ug/ml.