

## Product datasheet for **TA340520**

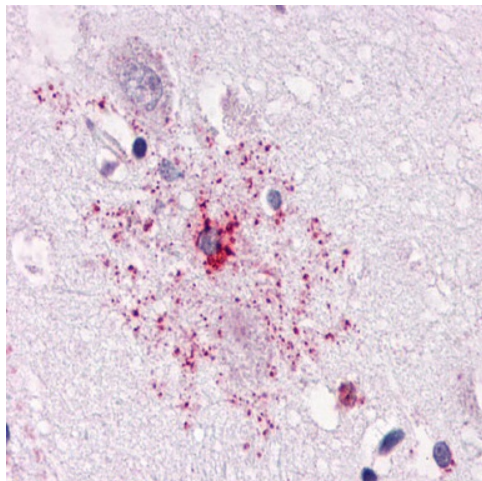
### APJ Receptor (APLNR) Rabbit Polyclonal Antibody

#### Product data:

Product Type:	Primary Antibodies
Applications:	IHC
Recommended Dilution:	IHC-P (4 - 7 µg/ml)
Reactivity:	Human (Predicted: Monkey, Mouse, Rat, Bat, Rabbit)
Host:	Rabbit
Clonality:	Polyclonal
Immunogen:	APLNR/ Apelin Receptor / APJ antibody was raised against synthetic 16 amino acid peptide from 1st cytoplasmic domain of human Apelin Receptor. Percent identity with other species by BLAST analysis: Human, Gorilla, Gibbon, Monkey, Hamster, Elephant, Panda, Horse (100%); Orangutan, Marmoset, Mouse, Rat, Bat, Rabbit (94%).
Formulation:	PBS, 0.1% sodium azide.
Concentration:	lot specific
Purification:	Immunoaffinity purified
Conjugation:	Unconjugated
Storage:	Store at -20°C as received.
Stability:	Stable for 12 months from date of receipt.
Gene Name:	apelin receptor
Database Link:	<a href="#">NP_005152</a> <a href="#">Entrez Gene 23796 Mouse</a> <a href="#">Entrez Gene 83518 Rat</a> <a href="#">Entrez Gene 706823 Monkey</a> <a href="#">Entrez Gene 187 Human</a> <a href="#">P35414</a>
Synonyms:	AGTRL1; APJ; APJR; HG11
Protein Families:	Druggable Genome, GPCR, Transmembrane
Protein Pathways:	Neuroactive ligand-receptor interaction



[View online »](#)

**Product images:**

Anti-Apelin Receptor antibody IHC of human brain, astrocyte. Immunohistochemistry of formalin-fixed, paraffin-embedded tissue after heat-induced antigen retrieval.