

Product datasheet for **TA340514**

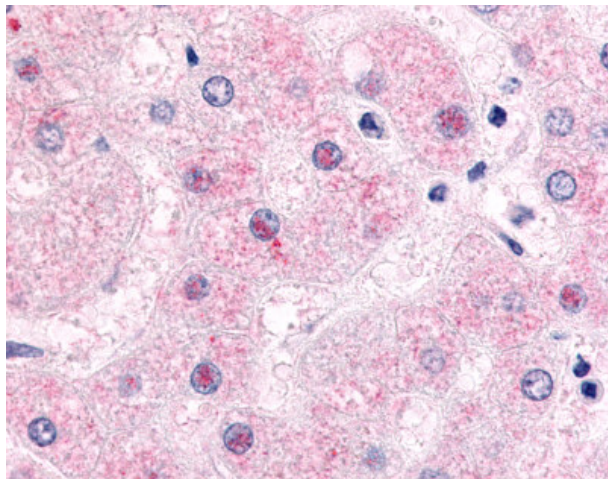
NR0B2 Rabbit Polyclonal Antibody

Product data:

Product Type:	Primary Antibodies
Applications:	IHC
Recommended Dilution:	IHC-P (4 µg/ml)
Reactivity:	Human (Predicted: Rat, Bat, Bovine)
Host:	Rabbit
Clonality:	Polyclonal
Immunogen:	NR0B2 / SHP antibody was raised against synthetic 16 amino acid peptide from ligand-binding domain of human NR0B2. Percent identity with other species by BLAST analysis: Human, Gorilla, Gibbon, Monkey, Marmoset, Mouse, Hamster, Rabbit (100%); Rat, Bovine, Bat (94%); Elephant, Panda, Horse, Pig, Opossum (88%); Dog (81%).
Formulation:	PBS, 0.1% sodium azide.
Concentration:	lot specific
Purification:	Immunoaffinity purified
Conjugation:	Unconjugated
Storage:	Store at -20°C as received.
Stability:	Stable for 12 months from date of receipt.
Gene Name:	nuclear receptor subfamily 0 group B member 2
Database Link:	NP_068804 Entrez Gene 117274 Rat Entrez Gene 8431 Human Q15466
Synonyms:	SHP; SHP1
Protein Families:	Druggable Genome, Transcription Factors



[View online »](#)

Product images:

Anti-NR0B2 antibody IHC of human liver, hepatocytes. Immunohistochemistry of formalin-fixed, paraffin-embedded tissue after heat-induced antigen retrieval.