

Product datasheet for **TA340510**

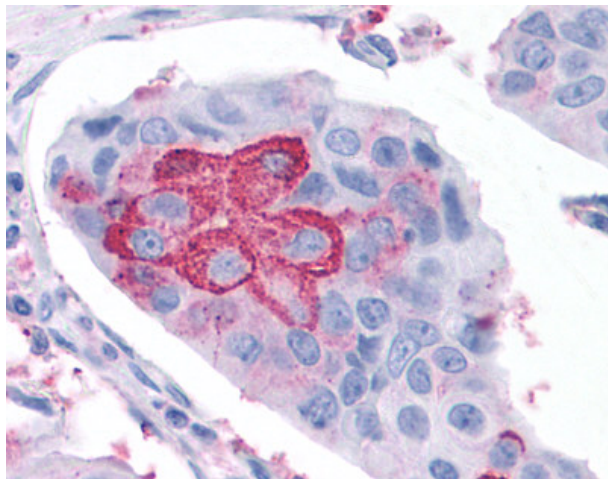
ROR gamma (RORC) Rabbit Polyclonal Antibody

Product data:

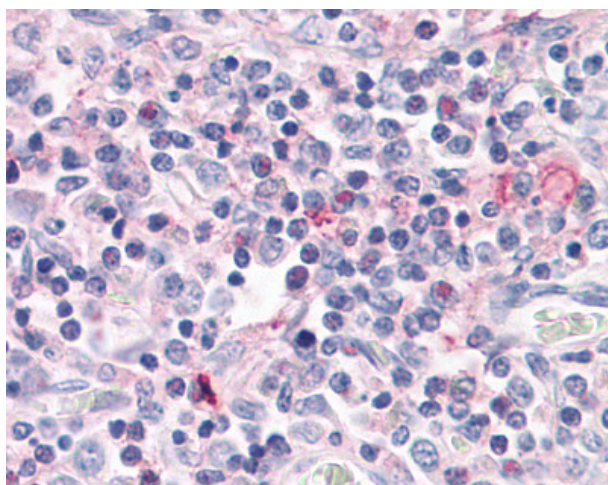
Product Type:	Primary Antibodies
Applications:	IHC
Recommended Dilution:	IHC-P (20 µg/ml)
Reactivity:	Human (Predicted: Bovine, Horse, Rabbit)
Host:	Rabbit
Clonality:	Polyclonal
Immunogen:	RORC / ROR Gamma antibody was raised against synthetic 18 amino acid peptide from ligand-binding domain of human ROR Gamma. Percent identity with other species by BLAST analysis: Human, Chimpanzee, Gorilla, Orangutan, Gibbon, Monkey, Marmoset, Tamarin, Elephant, Bat (100%); Bovine, Rabbit, Horse (94%); Mouse, Rat, Hamster, Panda (89%); Dog (83%).
Formulation:	PBS, 0.1% sodium azide.
Concentration:	lot specific
Purification:	Immunoaffinity purified
Conjugation:	Unconjugated
Storage:	Store at -20°C as received.
Stability:	Stable for 12 months from date of receipt.
Gene Name:	RAR related orphan receptor C
Database Link:	NP_005051 Entrez Gene 6097 Human P51449
Synonyms:	NR1F3; RORG; RZR-GAMMA; RZRG; TOR
Protein Families:	Druggable Genome, Transcription Factors



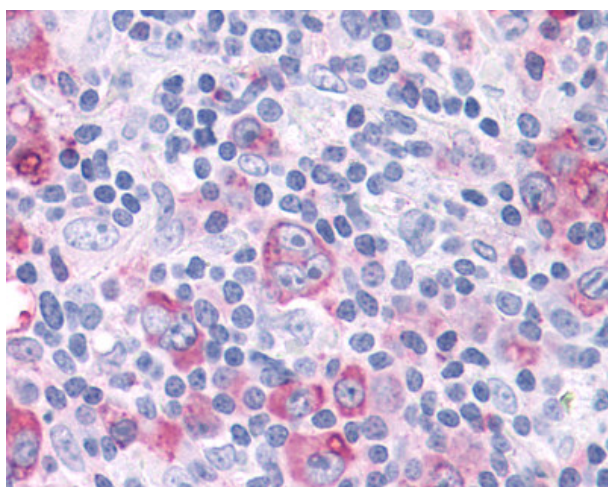
[View online »](#)

Product images:

Anti-RORC / ROR Gamma antibody IHC of human Breast, Carcinoma. Immunohistochemistry of formalin-fixed, paraffin-embedded tissue after heat-induced antigen retrieval.



Anti-ROR Gamma antibody IHC of human thymus. Immunohistochemistry of formalin-fixed, paraffin-embedded tissue after heat-induced antigen retrieval.



Anti-RORC / ROR Gamma antibody IHC of human Lymph Node, Hodgkins Lymphoma. Immunohistochemistry of formalin-fixed, paraffin-embedded tissue after heat-induced antigen retrieval.