

## Product datasheet for **TA340439**

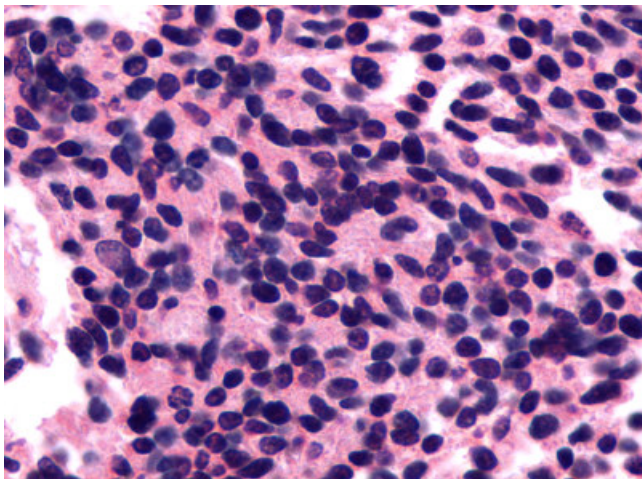
### Encephalopsin (OPN3) Rabbit Polyclonal Antibody

#### Product data:

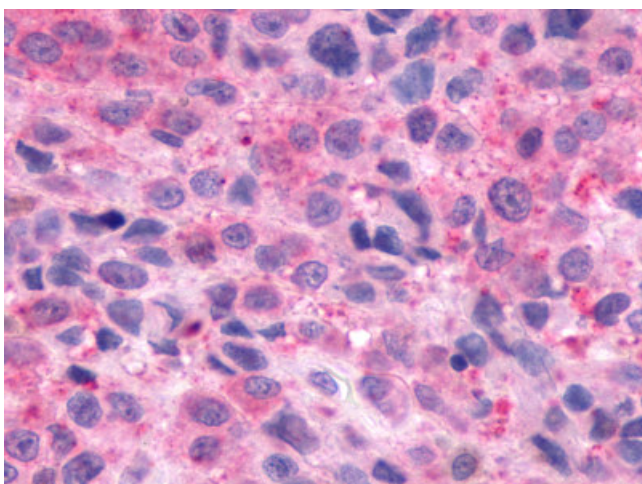
Product Type:	Primary Antibodies
Applications:	IHC
Recommended Dilution:	IHC-P (2 - 36 µg/ml)
Reactivity:	Human (Predicted: Dog)
Host:	Rabbit
Clonality:	Polyclonal
Immunogen:	Encephalopsin / OPN3 antibody was raised against synthetic 19 amino acid peptide from C-terminus of human OPN3 / Encephalopsin. Percent identity with other species by BLAST analysis: Human, Gibbon, Monkey (100%); Dog, Panda (95%); Marmoset, Rat, Elephant (89%); Mouse, Horse (84%).
Formulation:	PBS, 0.1% sodium azide.
Concentration:	lot specific
Purification:	Immunoaffinity purified
Conjugation:	Unconjugated
Storage:	Store at -20°C as received.
Stability:	Stable for 12 months from date of receipt.
Gene Name:	opsin 3
Database Link:	<a href="#">NP_055137</a> <a href="#">Entrez Gene 102155438 Dog</a> <a href="#">Entrez Gene 23596 Human</a> <a href="#">Q9H1Y3</a>
Synonyms:	ECPN; PPP1R116
Protein Families:	Druggable Genome, GPCR, Transmembrane



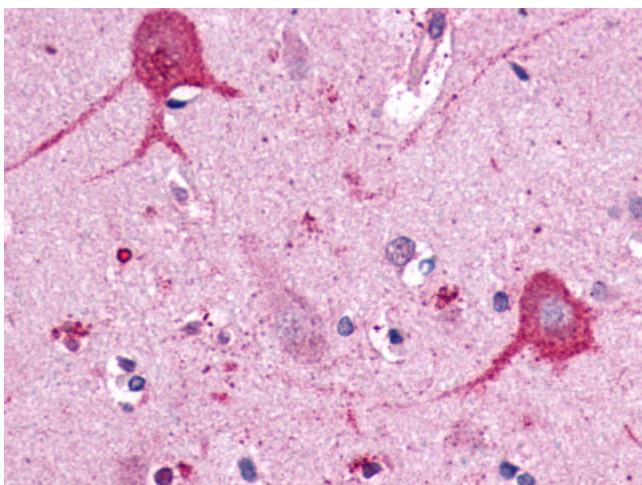
[View online »](#)

**Product images:**

Anti-Encephalopsin / OPN3 antibody IHC of human Lung, Small Cell Carcinoma. Immunohistochemistry of formalin-fixed, paraffin-embedded tissue after heat-induced antigen retrieval.



Anti-Encephalopsin / OPN3 antibody IHC of human Skin, Melanoma. Immunohistochemistry of formalin-fixed, paraffin-embedded tissue after heat-induced antigen retrieval.



Anti-OPN3 / Encephalopsin antibody IHC of human brain, neurons and glia. Immunohistochemistry of formalin-fixed, paraffin-embedded tissue after heat-induced antigen retrieval.