

Product datasheet for **TA340438**

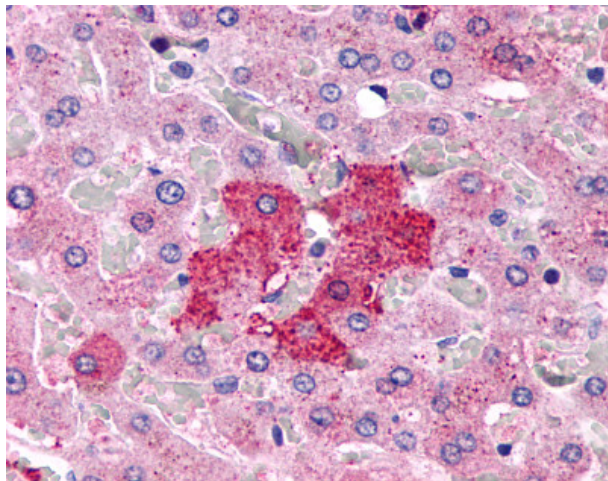
GPR 153 (GPR153) Rabbit Polyclonal Antibody

Product data:

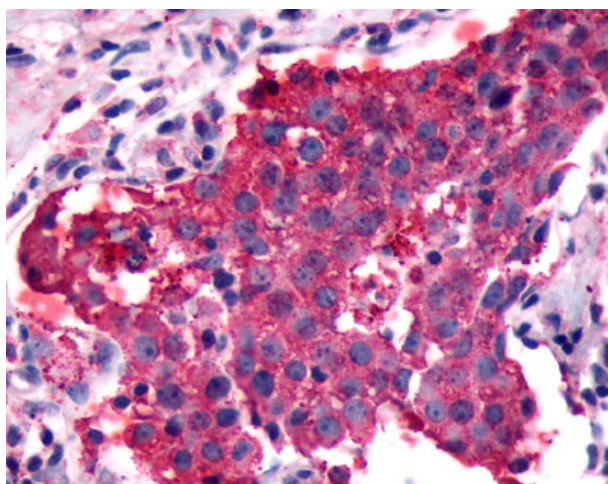
Product Type:	Primary Antibodies
Applications:	IHC
Recommended Dilution:	IHC-P (12 µg/ml)
Reactivity:	Human (Predicted: Bat)
Host:	Rabbit
Clonality:	Polyclonal
Immunogen:	PGR1 / GPR153 antibody was raised against synthetic 17 amino acid peptide from 2nd extracellular domain of human GPR153. Percent identity with other species by BLAST analysis: Human, Gorilla, Monkey, Marmoset, Mouse, Rat, Dog, Bovine, Hamster, Rabbit, Pig (100%); Bat, Elephant, Panda (94%); Horse (88%); Opossum, Platypus (82%).
Formulation:	PBS, 0.1% sodium azide.
Concentration:	lot specific
Purification:	Immunoaffinity purified
Conjugation:	Unconjugated
Storage:	Store at -20°C as received.
Stability:	Stable for 12 months from date of receipt.
Gene Name:	G protein-coupled receptor 153
Database Link:	NP_997253 Entrez Gene 387509 Human Q6NV75
Synonyms:	PGR1
Protein Families:	Druggable Genome, Transmembrane



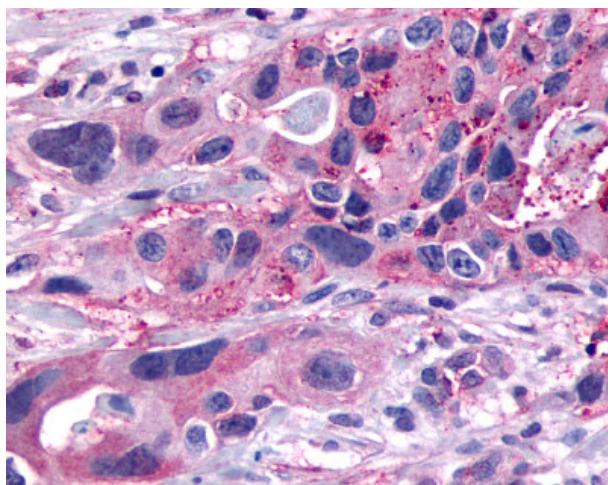
[View online »](#)

Product images:

Anti-GPR153 antibody IHC of human liver, hepatocytes. Immunohistochemistry of formalin-fixed, paraffin-embedded tissue after heat-induced antigen retrieval.



Anti-PGR1 / GPR153 antibody IHC of human Breast, Carcinoma. Immunohistochemistry of formalin-fixed, paraffin-embedded tissue after heat-induced antigen retrieval.



Anti-PGR1 / GPR153 antibody IHC of human Pancreas, Carcinoma. Immunohistochemistry of formalin-fixed, paraffin-embedded tissue after heat-induced antigen retrieval.