

## Product datasheet for **TA340437**

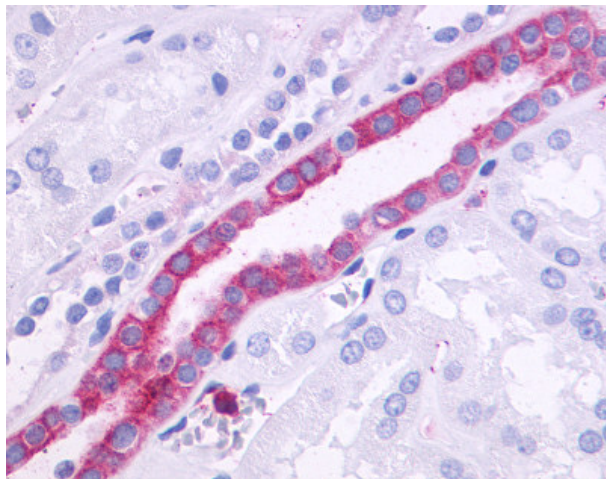
### ADGRF1

#### Product data:

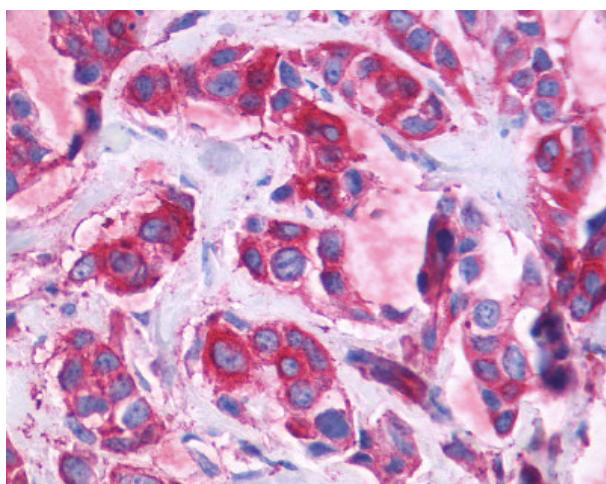
Product Type:	Primary Antibodies
Applications:	IHC
Recommended Dilution:	IHC IHC-P (5 - 10 µg/ml)
Reactivity:	Human
Host:	Rabbit
Clonality:	Polyclonal
Immunogen:	Synthetic 17 amino acid peptide from N-Terminus extracellular domain of human GPR110. Percent identity with other species by BLAST analysis: Human, Gorilla, Gibbon (100%); Marmoset (88%).
Specificity:	Human GPR110. BLAST analysis of the peptide immunogen showed no homology with other human proteins.
Formulation:	PBS, 0.1% Sodium Azide
Concentration:	lot specific
Purification:	Immunoaffinity purified
Conjugation:	Unconjugated
Storage:	Aliquot and store undiluted at -20°C or below for up to 1 year. Can be stored undiluted at 4°C for up to 1 month. Avoid freeze-thaw cycles.
Stability:	12 months from date of despatch
Gene Name:	adhesion G protein-coupled receptor F1
Database Link:	<a href="#">NP_722582</a> <a href="#">Entrez Gene 266977 Human</a> <a href="#">Q5T601</a>
Background:	GPR110 antibody TA340437 is an unconjugated rabbit polyclonal antibody to human GPR110 (ADGRF1) (N-Terminus). Validated for IHC. Cited in 2 publications.
Synonyms:	ADGRF1, G protein-coupled receptor 110, G-protein coupled receptor 110, GPR110, HGPCR36, KPG_012, PGR19
Protein Families:	Druggable Genome, Transmembrane



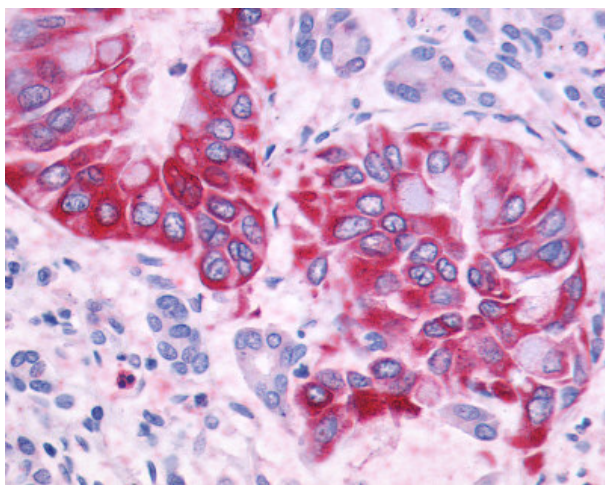
[View online »](#)

**Product images:**

Anti-GPR110 antibody IHC of human kidney, renal tubules. Immunohistochemistry of formalin-fixed, paraffin-embedded tissue after heat-induced antigen retrieval.



Anti-GPR110 antibody IHC of human Breast, Carcinoma. Immunohistochemistry of formalin-fixed, paraffin-embedded tissue after heat-induced antigen retrieval.



Anti-GPR110 antibody IHC of human Pancreas, Carcinoma. Immunohistochemistry of formalin-fixed, paraffin-embedded tissue after heat-induced antigen retrieval.