

Product datasheet for **TA340435**

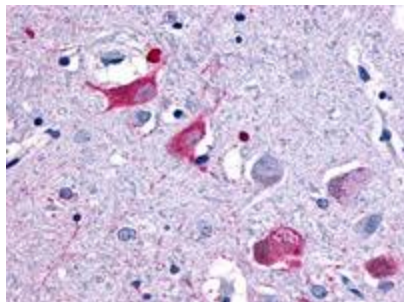
MCH2 (MCHR2) Rabbit Polyclonal Antibody

Product data:

Product Type:	Primary Antibodies
Applications:	IHC
Recommended Dilution:	IHC-P (8 - 19 µg/ml)
Reactivity:	Human (Predicted: Dog, Horse)
Host:	Rabbit
Clonality:	Polyclonal
Immunogen:	MCHR2 antibody was raised against synthetic 16 amino acid peptide from 1st cytoplasmic domain of human MCHR2. Percent identity with other species by BLAST analysis: Human, Gorilla, Gibbon, Monkey, Marmoset (100%); Dog, Panda, Horse, Platypus (94%); Bat, Elephant, Pig, Xenopus (88%); Bovine (81%).
Formulation:	PBS, 0.1% sodium azide.
Concentration:	lot specific
Purification:	Immunoaffinity purified
Conjugation:	Unconjugated
Storage:	Store at -20°C as received.
Stability:	Stable for 12 months from date of receipt.
Gene Name:	melanin concentrating hormone receptor 2
Database Link:	NP_001035269 Entrez Gene 403562 Dog Entrez Gene 84539 Human Q969V1
Synonyms:	GPR145; GPRv17; MCH-2R; MCH-R2; MCH2; MCH2R; MCHR-2; SLT
Protein Families:	Druggable Genome, GPCR, Transmembrane
Protein Pathways:	Neuroactive ligand-receptor interaction



[View online »](#)

Product images:

Anti-MCHR2 antibody IHC of human brain, neurons. Immunohistochemistry of formalin-fixed, paraffin-embedded tissue after heat-induced antigen retrieval.