

Product datasheet for **TA340433**

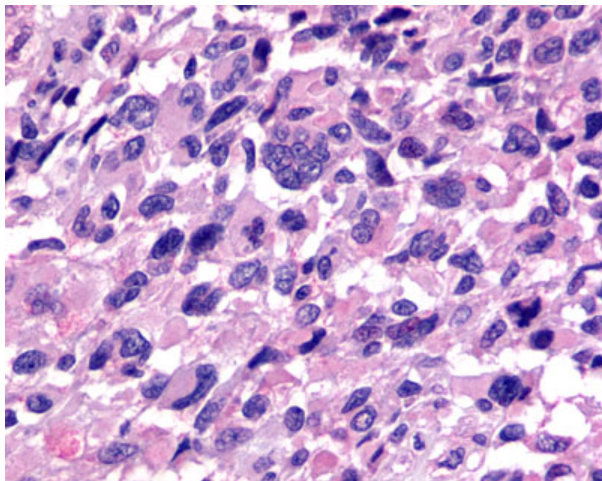
Relaxin 3 receptor 1 (RXFP3) Rabbit Polyclonal Antibody

Product data:

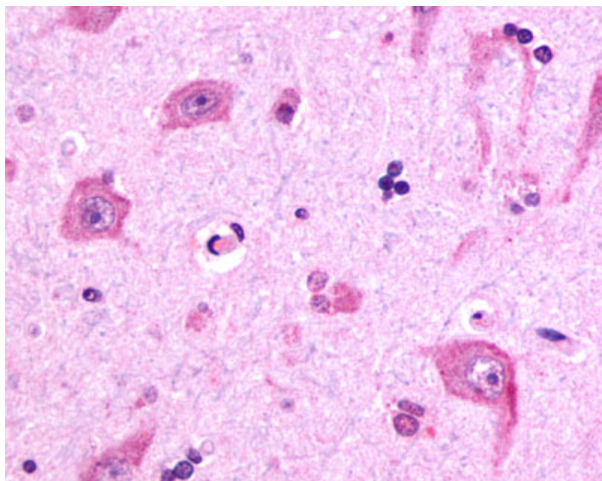
Product Type:	Primary Antibodies
Applications:	IHC
Recommended Dilution:	IHC-P (6 - 15 µg/ml)
Reactivity:	Human (Predicted: Monkey, Bovine)
Host:	Rabbit
Clonality:	Polyclonal
Immunogen:	RXFP3 antibody was raised against synthetic 17 amino acid peptide from C-terminus of human RXFP3. Percent identity with other species by BLAST analysis: Human, Gorilla (100%); Monkey, Marmoset, Bovine, Elephant (94%); Mouse, Rat, Hamster, Rabbit, Pig (88%); Panda (82%).
Formulation:	PBS, 0.1% sodium azide.
Concentration:	lot specific
Purification:	Immunoaffinity purified
Conjugation:	Unconjugated
Storage:	Store at -20°C as received.
Stability:	Stable for 12 months from date of receipt.
Gene Name:	relaxin/insulin like family peptide receptor 3
Database Link:	NP_057652 Entrez Gene 698115 Monkey Entrez Gene 51289 Human Q9NSD7
Synonyms:	GPCR135; RLN3R1; RXFPR3; SALPR
Protein Families:	Druggable Genome, GPCR, Transmembrane



[View online »](#)

Product images:

Anti-RXFP3 antibody IHC of human Brain, Glioblastoma. Immunohistochemistry of formalin-fixed, paraffin-embedded tissue after heat-induced antigen retrieval.



Anti-RXFP3 antibody IHC of human brain, neurons and glia. Immunohistochemistry of formalin-fixed, paraffin-embedded tissue after heat-induced antigen retrieval.