

## Product datasheet for **TA340432**

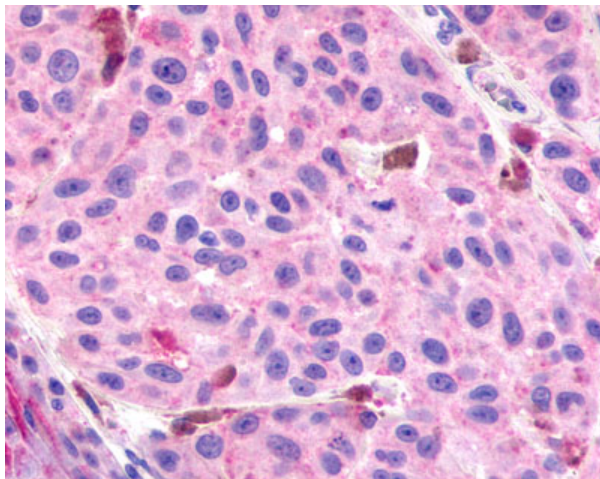
### Relaxin 3 receptor 1 (RXFP3) Rabbit Polyclonal Antibody

#### Product data:

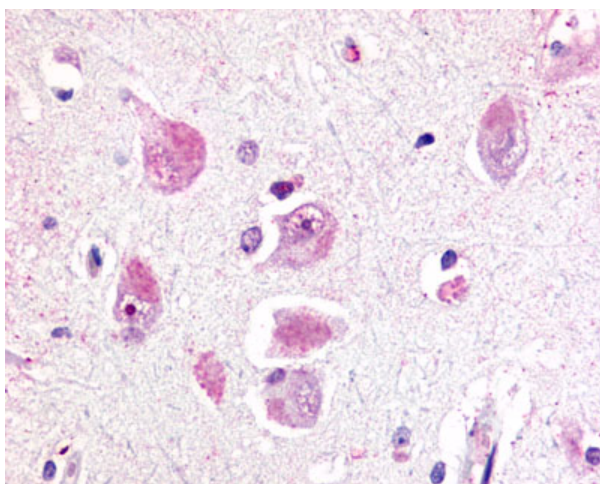
Product Type:	Primary Antibodies
Applications:	IHC
Recommended Dilution:	IHC-P (14 - 28 µg/ml)
Reactivity:	Human (Predicted: Monkey, Mouse, Bovine, Pig)
Host:	Rabbit
Clonality:	Polyclonal
Immunogen:	RXFP3 antibody was raised against synthetic 20 amino acid peptide from 2nd cytoplasmic domain of human RXFP3. Percent identity with other species by BLAST analysis: Human, Gorilla, Marmoset, Rat, Hamster (100%); Monkey, Mouse, Bovine, Panda, Pig (95%); Rabbit, Opossum (80%).
Formulation:	PBS, 0.1% sodium azide.
Concentration:	lot specific
Purification:	Immunoaffinity purified
Conjugation:	Unconjugated
Storage:	Store at -20°C as received.
Stability:	Stable for 12 months from date of receipt.
Gene Name:	relaxin/insulin like family peptide receptor 3
Database Link:	<a href="#">NP_057652</a> <a href="#">Entrez Gene 239336 Mouse</a> <a href="#">Entrez Gene 698115 Monkey</a> <a href="#">Entrez Gene 51289 Human</a> <a href="#">Q9NSD7</a>
Synonyms:	GPCR135; RLN3R1; RXFPR3; SALPR
Protein Families:	Druggable Genome, GPCR, Transmembrane



[View online »](#)

**Product images:**

Anti-RXFP3 antibody IHC of human Skin, Melanoma. Immunohistochemistry of formalin-fixed, paraffin-embedded tissue after heat-induced antigen retrieval.



Anti-RXFP3 antibody IHC of human brain, neurons and glia. Immunohistochemistry of formalin-fixed, paraffin-embedded tissue after heat-induced antigen retrieval.