

## Product datasheet for **TA340424**

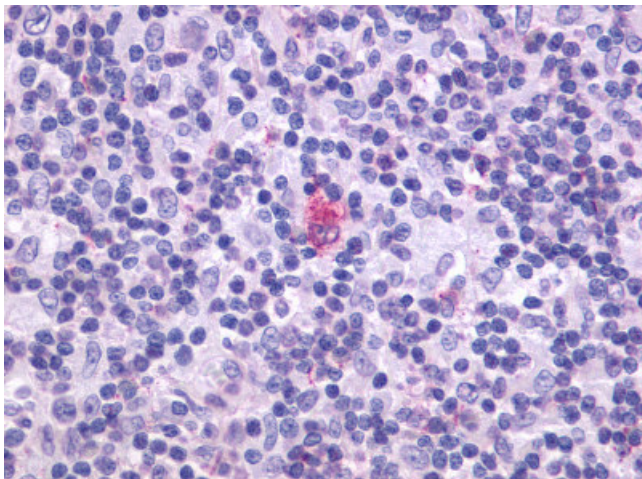
### CXCR5 Rabbit Polyclonal Antibody

#### Product data:

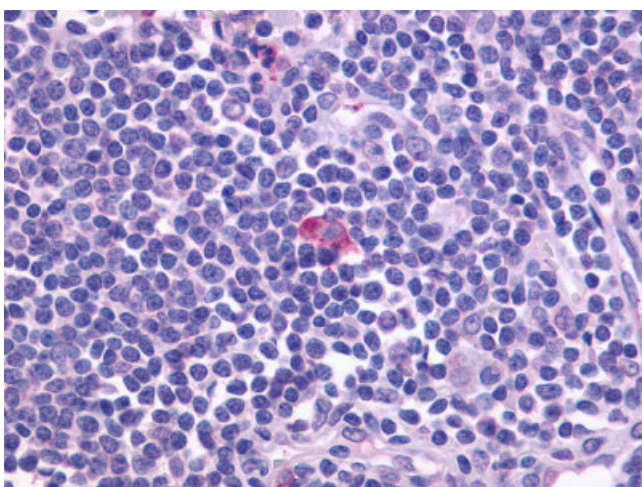
Product Type:	Primary Antibodies
Applications:	IHC
Recommended Dilution:	IHC-P (5 - 18 µg/ml)
Reactivity:	Human (Predicted: Mouse, Rat, Bovine, Dog, Hamster, Pig, Rabbit)
Host:	Rabbit
Clonality:	Polyclonal
Immunogen:	CXCR5 antibody was raised against synthetic 16 amino acid peptide from 3rd cytoplasmic domain of human CXCR5. Percent identity with other species by BLAST analysis: Human, Gorilla, Gibbon, Monkey (100%); Mouse, Rat, Dog, Bovine, Hamster, Panda, Rabbit, Pig (94%).
Formulation:	PBS, 0.1% sodium azide.
Concentration:	lot specific
Purification:	Immunoaffinity purified
Conjugation:	Unconjugated
Storage:	Store at -20°C as received.
Stability:	Stable for 12 months from date of receipt.
Gene Name:	C-X-C motif chemokine receptor 5
Database Link:	<a href="#">NP_001707</a> <a href="#">Entrez Gene 12145 Mouse</a> <a href="#">Entrez Gene 29363 Rat</a> <a href="#">Entrez Gene 489378 Dog</a> <a href="#">Entrez Gene 643 Human</a> <a href="#">P32302</a>
Synonyms:	BLR1; CD185; MDR15
Protein Families:	Druggable Genome, GPCR, Transmembrane
Protein Pathways:	Chemokine signaling pathway, Cytokine-cytokine receptor interaction



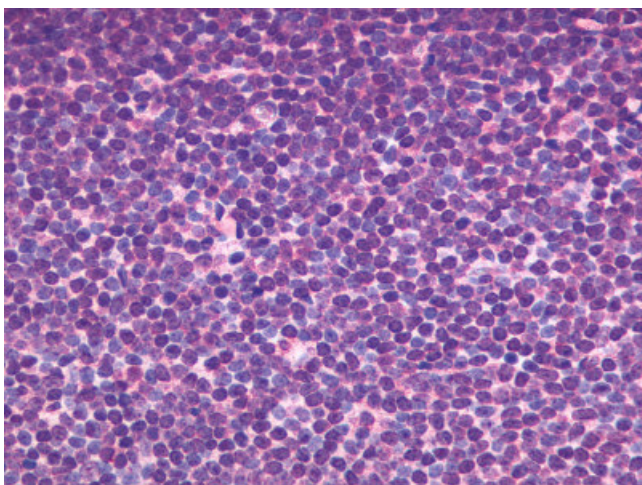
[View online »](#)

**Product images:**

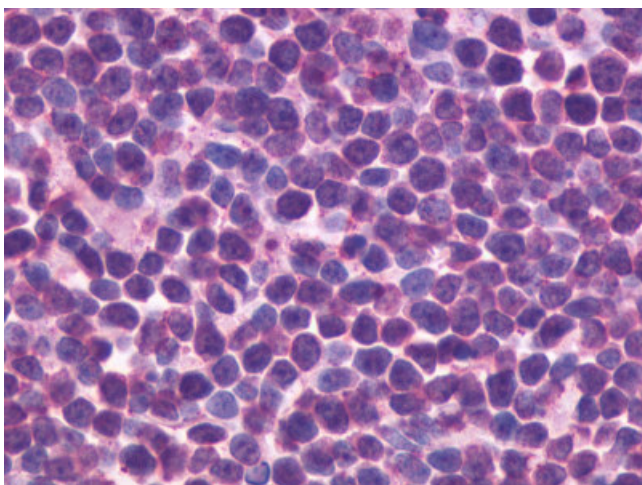
Anti-CXCR5 antibody IHC of human Lymph Node, Hodgkins Lymphoma. Immunohistochemistry of formalin-fixed, paraffin-embedded tissue after heat-induced antigen retrieval.



Anti-CXCR5 antibody IHC of human spleen. Immunohistochemistry of formalin-fixed, paraffin-embedded tissue after heat-induced antigen retrieval.



Anti-CXCR5 antibody IHC of human Lymph Node, B-Cell, Mantle Cell Lymphoma. Immunohistochemistry of formalin-fixed, paraffin-embedded tissue after heat-induced antigen retrieval.



Anti-CXCR5 antibody IHC of human Small Intestine, B-Cell, Burkitt Lymphoma. Immunohistochemistry of formalin-fixed, paraffin-embedded tissue after heat-induced antigen retrieval.