

Product datasheet for **TA340418**

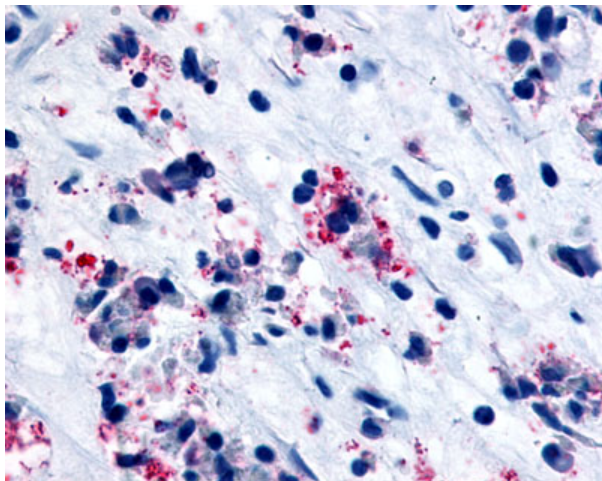
CysLT1 (CYSLTR1) Rabbit Polyclonal Antibody

Product data:

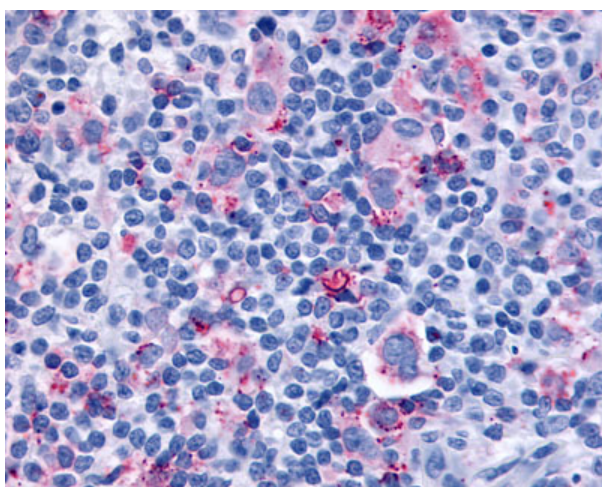
Product Type:	Primary Antibodies
Applications:	IHC
Recommended Dilution:	IHC-P (9 - 22 µg/ml)
Reactivity:	Human (Predicted: Monkey, Mouse)
Host:	Rabbit
Clonality:	Polyclonal
Immunogen:	CYSLTR1 / CYSLT1 antibody was raised against synthetic 20 amino acid peptide from C-terminus of human CYSLTR1 / CYSLT1. Percent identity with other species by BLAST analysis: Human, Gorilla (100%); Monkey, Marmoset (95%); Gibbon, Mouse, Panda (90%); Rat, Bovine, Elephant, Rabbit, Pig (85%).
Formulation:	PBS, 0.1% sodium azide.
Concentration:	lot specific
Purification:	Immunoaffinity purified
Conjugation:	Unconjugated
Storage:	Store at -20°C as received.
Stability:	Stable for 12 months from date of receipt.
Gene Name:	cysteinyl leukotriene receptor 1
Database Link:	NP_006630 Entrez Gene 58861 Mouse Entrez Gene 706663 Monkey Entrez Gene 10800 Human Q9Y271
Synonyms:	CYSLT1; CYSLT1R; CYSLTR; HMTMF81
Protein Families:	Druggable Genome, GPCR, Transmembrane
Protein Pathways:	Calcium signaling pathway, Neuroactive ligand-receptor interaction



[View online »](#)

Product images:

Anti-CYSLTR1 / CYSLT1 antibody IHC of human nasal mucosa, allergic rhinitis, eosinophils. Immunohistochemistry of formalin-fixed, paraffin-embedded tissue after heat-induced antigen retrieval.



Anti-CYSLTR1 / CYSLT1 antibody IHC of human Lymph Node, Hodgkins Lymphoma. Immunohistochemistry of formalin-fixed, paraffin-embedded tissue after heat-induced antigen retrieval.