

Product datasheet for **TA340416**

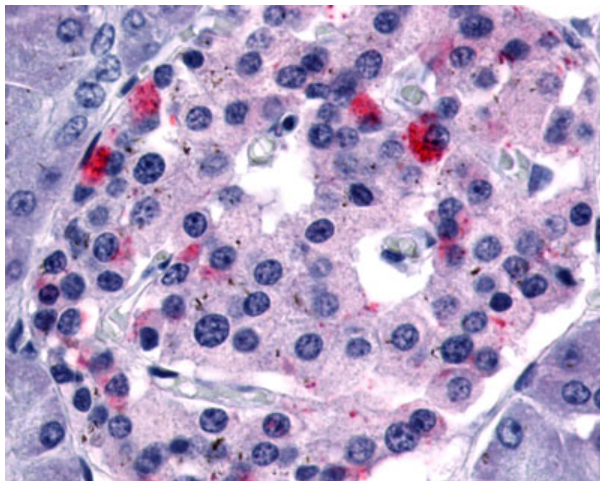
GPR35 Rabbit Polyclonal Antibody

Product data:

Product Type:	Primary Antibodies
Applications:	IHC
Recommended Dilution:	IHC-P (9 - 22 µg/ml)
Reactivity:	Human
Host:	Rabbit
Clonality:	Polyclonal
Immunogen:	GPR35 antibody was raised against synthetic 18 amino acid peptide from 3rd extracellular domain of human GPR35. Percent identity with other species by BLAST analysis: Human, Gorilla, Gibbon (100%); Monkey (83%).
Formulation:	PBS, 0.1% sodium azide.
Concentration:	lot specific
Purification:	Immunoaffinity purified
Conjugation:	Unconjugated
Storage:	Store at -20°C as received.
Stability:	Stable for 12 months from date of receipt.
Gene Name:	G protein-coupled receptor 35
Database Link:	NP_005292 Entrez Gene 2859 Human Q9HC97
Synonyms:	G protein-coupled receptor 35
Protein Families:	Druggable Genome, GPCR, Transmembrane
Protein Pathways:	Neuroactive ligand-receptor interaction



[View online »](#)

Product images:

Anti-GPR35 antibody IHC of human pancreas. Immunohistochemistry of formalin-fixed, paraffin-embedded tissue after heat-induced antigen retrieval.