

Product datasheet for **TA340411**

WFDC5 Rabbit Polyclonal Antibody

Product data:

| | |
|-------------------------|---|
| Product Type: | Primary Antibodies |
| Applications: | WB |
| Recommended Dilution: | WB |
| Reactivity: | Human |
| Host: | Rabbit |
| Isotype: | IgG |
| Clonality: | Polyclonal |
| Immunogen: | The immunogen for anti-WFDC5 antibody: synthetic peptide directed towards the N terminal of human WFDC5. Synthetic peptide located within the following region: MRTQSLLLLGALLAVGSQLPAVFGRRKKGEKSGGCPPDDGPCLLSVPDQCV |
| Formulation: | Liquid. Purified antibody supplied in 1x PBS buffer with 0.09% (w/v) sodium azide and 2% sucrose. |
| Concentration: | lot specific |
| Purification: | Affinity Purified |
| Conjugation: | Unconjugated |
| Storage: | Store at -20°C as received. |
| Stability: | Stable for 12 months from date of receipt. |
| Predicted Protein Size: | 11 kDa |
| Gene Name: | WAP four-disulfide core domain 5 |
| Database Link: | NP_663627 Entrez Gene 149708 Human Q8TCV5 |



[View online »](#)

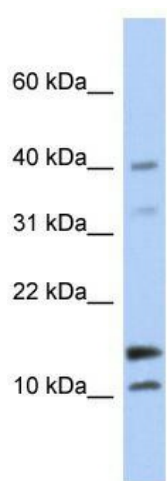
Background: WFDC5 is a putative acid-stable proteinase inhibitor. This gene encodes a member of the WAP-type four-disulfide core (WFDC) domain family. Most WFDC proteins contain only one WFDC domain, and this encoded protein contains two WFDC domains. The WFDC domain, or WAP signature motif, contains eight cysteines forming four disulfide bonds at the core of the protein, and functions as a protease inhibitor. Most WFDC gene members are localized to chromosome 20q12-q13 in two clusters: centromeric and telomeric. This gene belongs to the centromeric cluster.

Synonyms: dj211D12.5; PRG5; WAP1

Note: Immunogen Sequence Homology: Human: 100%; Pig: 86%; Guinea pig: 85%; Bovine: 79%

Protein Families: Secreted Protein

Product images:



WB Suggested Anti-WFDC5 Antibody Titration:
0.2-1 ug/ml; ELISA Titer: 1: 1562500; Positive
Control: Human brain