

## Product datasheet for **TA340410**

### NSUN5P1 Rabbit Polyclonal Antibody

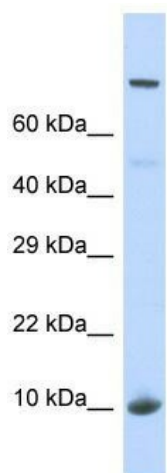
#### Product data:

Product Type:	Primary Antibodies
Applications:	WB
Recommended Dilution:	WB
Reactivity:	Human
Host:	Rabbit
Isotype:	IgG
Clonality:	Polyclonal
Immunogen:	The immunogen for Anti-NSUN5P1 antibody is: synthetic peptide directed towards the N-terminal region of Human NSUN5P1. Synthetic peptide located within the following region: GTPSPVRLHALAGFQQRALCHALTFPSLQRLVYSMCSLCQEENEDMVPDA
Formulation:	Liquid. Purified antibody supplied in 1x PBS buffer with 0.09% (w/v) sodium azide and 2% sucrose.
Concentration:	lot specific
Purification:	Affinity Purified
Conjugation:	Unconjugated
Storage:	Store at -20°C as received.
Stability:	Stable for 12 months from date of receipt.
Predicted Protein Size:	12 kDa
Gene Name:	NOP2/Sun RNA methyltransferase family member 5 pseudogene 1
Database Link:	<a href="#">NP_001034664</a> <a href="#">Entrez Gene 155400 Human</a>
Background:	The function of this protein remains unknown.
Synonyms:	MGC129801; WBSCR20B
Note:	Immunogen Sequence Homology: Horse: 100%; Human: 100%; Dog: 91%; Pig: 91%; Rat: 91%; Mouse: 91%; Bovine: 79%



[View online »](#)

## Product images:



Host: Rabbit; Target Name: NSUN5P1; Sample  
Tissue: Fetal Liver lysates; Antibody Dilution: 1.0  
ug/ml