

Product datasheet for **TA340409**

STOML3 Rabbit Polyclonal Antibody

Product data:

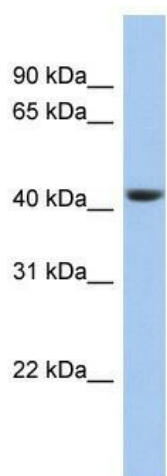
Product Type:	Primary Antibodies
Applications:	WB
Recommended Dilution:	WB
Reactivity:	Human
Host:	Rabbit
Isotype:	IgG
Clonality:	Polyclonal
Immunogen:	The immunogen for anti-STOML3 antibody: synthetic peptide directed towards the middle region of human STOML3. Synthetic peptide located within the following region: LAQTTLRNVLGTQTLSQLAGREEIAHSIQTLDDATELWGRVARVEIK
Formulation:	Liquid. Purified antibody supplied in 1x PBS buffer with 0.09% (w/v) sodium azide and 2% sucrose. <i>Note that this product is shipped as lyophilized powder to China customers.</i>
Concentration:	lot specific
Purification:	Affinity Purified
Conjugation:	Unconjugated
Storage:	Store at -20°C as received.
Stability:	Stable for 12 months from date of receipt.
Predicted Protein Size:	32 kDa
Gene Name:	stomatin like 3
Database Link:	NP_660329 Entrez Gene 161003 Human Q8TAV4
Background:	The specific function of the protein remains unknown.
Synonyms:	Epb7.2l; SRO
Note:	Immunogen Sequence Homology: Dog: 100%; Pig: 100%; Rat: 100%; Human: 100%; Mouse: 100%; Bovine: 100%; Rabbit: 100%; Guinea pig: 100%; Horse: 93%



[View online »](#)

Protein Families: Transmembrane

Product images:



WB Suggested Anti-STOML3 Antibody Titration:
0.2-1 ug/ml; ELISA Titer: 1: 62500; Positive
Control: 721_B cell lysate